



ELECTRIFICATION PRODUCTS PRICE LIST (₹)

01

WITH EFFECT FROM 10TH FEBRUARY 2026



ABB
ENGINEERED
TO OUTRUN

Tmax XT circuit breakers

MCCB for power distribution & Generator Protection



Type	Iu (40° C) [A]	Ue [V]		Category	Release	Icu (380 - 415 V AC) [kA]											
		AC	DC			16	25	36	50	70	85	100	120	150	200		
XT1	160	690	500	A	TMD/TMF	B	C	N	S	H							
XT2	160	690	500	A	TMD/TMA Ekip Dip LS/I Ekip Dip LIG / Dip LSIG Ekip C Dip LSIG Ekip Touch LSIG / Hi-Touch Ekip Touch Measuring LSIG Ekip G Dip LS/I Ekip G Touch LSIG/ G Hi-Touch			N	S	H			L		V		
XT3	250	690	500	A	TMD TMG			N	S								
XT4	250	690	750	A	TMD/TMA Ekip Dip LS/I Ekip Dip LIG / Dip LSIG Ekip C Dip LSIG Ekip Touch LSIG / Hi-Touch Ekip Touch Measuring LSIG Ekip G Dip LS/I Ekip G Touch LSIG/ G Hi-Touch			N	S	H			L	V	X		
XT5	400 630	690	750	B (500 A) A (630 A)	TMA TMG Ekip Dip LS/I Ekip Dip LIG / Dip LSIG Ekip Touch LSIG / Hi-Touch Ekip Touch Measuring LSIG Ekip G Dip LS/I Ekip G Touch LSIG/ G Hi-Touch			N	S	H			L		V, X		
XT6	630 800	690	750	B (630A - 800 A)	TMA Ekip Dip LS/I Ekip Dip LIG / Dip LSIG Ekip G Dip LS/I			N	S	H							
XT7/ XT7M	1000 1250 1600	690		B	Ekip Dip LS/I Ekip Dip LIG / Dip LSIG Ekip Touch LSIG / Hi-Touch Ekip Touch Measuring LSIG Ekip G Dip LS/I Ekip G Touch LSIG/ G Hi-Touch				S	H			L				

Trip Units

Thermal magnetic trip units

- TMF - Fixed thermal and fixed magnetic for power distribution
- TMD - Adjustable thermal (70-100% of In) and fixed magnetic (10 x In) for power distribution
- TMA - Adjustable thermal (70-100% of In) and adjustable magnetic (5-10 of In) for power distribution
- TMG - Adjustable thermal (70-100% of In) and low fixed magnetic (3 x In) for generator protection

Microprocessor based trip units

	L = 0.40 - 1 In		L = 0.40 - 1 In		L = 0.4 - 1 In		L = 0.4 - 1 In
Ekip Dip LS/I	S = 1 - 10 In		I = 1 - 10 In	Ekip Dip LSIG	S = 1 - 10 In ⁽¹⁾	Ekip Touch LSIG/	L = 0.4 - 1 In
Ekip G Dip LS/I	I = 1 - 10 In	Ekip Dip LIG	G = 0.2 - 1 In	Ekip C Dip LSIG (XT2...XT6)	I = 1 - 10 In ⁽¹⁾	Touch measuring LSIG/ Hi-Touch LSIG	S = 0.6 - 10 In
					G = 0.2 - 1 In ⁽¹⁾	Ekip G Touch LSIG/ G Hi-Touch LSIG	I = 1.5 - 10 In ⁽²⁾
							G = 0.1 - 1 In

Note :

L = Overload S = Short circuit I = Instantaneous short circuit G = Earth fault

⁽¹⁾ for XT7 Dip, S = 0.6 to 10 In, I = 1.5 to 15 In, G = 0.1 to 1 In

⁽²⁾ for XT7 Touch, I = 1.5 to 15 In, G = 0.1 to 1 In

For detailed information about trip units, refer technical catalogue.

Tmax XT power distribution circuit breakers

Protection: TMD/TMF

XT1/XT3

Breaking capacity at 415VAC

	Icu	Ics (Icu)
B	18kA	100%
C	25kA	100%
N	36kA	100%

Breaking capacity at 415VAC

	Icu	Ics (Icu)
S	50kA	100% ¹⁾
H	70kA	100% ²⁾

TMD/TMF

Frame	In (A)	Poles	B		C	
			Ordering code	L.P.(₹)	Ordering code	L.P.(₹)
XT1 160	16	3	1SDA066799R1		1SDA080825R1	
	20		1SDA066800R1		1SDA080826R1	
	25		1SDA066801R1		1SDA067391R1	
	32		1SDA066802R1		1SDA067392R1	
	40		1SDA066803R1 ■	12,450	1SDA067393R1 ■	13,810
	50		1SDA066804R1 ■		1SDA067394R1 ■	
	63		1SDA066805R1 ■		1SDA067395R1 ■	
	80		1SDA066806R1 ■		1SDA067396R1 ■	
	100	1SDA066807R1 ■		1SDA067397R1 ■		
	125	1SDA066808R1 ■	18,850	1SDA067398R1 ■	21,590	
	160	1SDA066809R1 ■	20,820	1SDA067399R1 ■	27,760	
	16	4	1SDA066810R1		1SDA080840R1	
	20		1SDA066811R1		1SDA080841R1	
	25		1SDA066812R1		1SDA067400R1	
	32		1SDA066813R1 ■		1SDA067401R1 ■	
	40		1SDA066814R1 ■	17,450	1SDA067402R1 ■	19,990
50	1SDA066815R1			1SDA067403R1 ■		
63	1SDA066816R1 ■			1SDA067404R1 ■		
80	1SDA066817R1 ■			1SDA067405R1 ■		
100	1SDA066818R1 ■		1SDA067406R1 ■			
125	1SDA066888R1 ■	23,010	1SDA067409R1 ■	26,320		
160	1SDA066821R1 ■	29,180	1SDA067410R1 ■	33,910		

TMD / TMF

Frame	In (A)	Poles	N		S		H	
			Ordering code	L.P.(₹)	Ordering code	L.P.(₹)	Ordering code	L.P.(₹)
XT1 160	16	3	1SDA080827R1*		1SDA080830R1*		1SDA080835R1*	
	20		1SDA080828R1*		1SDA080831R1*		1SDA080836R1*	
	25		1SDA080829R1		1SDA080832R1		1SDA080837R1	
	32		1SDA067411R1		1SDA080833R1 ■		1SDA080838R1	
	40		1SDA067412R1 ■	17,880	1SDA080834R1 ■	18,630	1SDA080839R1	22,120
	50		1SDA067413R1 ■		1SDA067431R1		1SDA067449R1	
	63		1SDA067414R1 ■		1SDA067432R1 ■		1SDA067450R1	
	80		1SDA067415R1 ■		1SDA067433R1 ■		1SDA067451R1	
	100	1SDA067416R1 ■		1SDA067434R1 ■		1SDA067452R1		
	125	1SDA067417R1 ■	23,900	1SDA067435R1 ■	26,310	1SDA067453R1	33,440	
	160	1SDA067418R1 ■	30,820	1SDA067436R1 ■	32,280	1SDA067454R1	38,150	
	16	4	1SDA080842R1*		1SDA080845R1*		1SDA080850R1*	
	20		1SDA080843R1*		1SDA080846R1*		1SDA080851R1*	
	25		1SDA080844R1 ■		1SDA080847R1		1SDA080852R1	
	32		1SDA067419R1 ■		1SDA080848R1		1SDA080853R1	
	40		1SDA067420R1 ■	23,080	1SDA080849R1	27,490	1SDA080854R1	30,980
50	1SDA067421R1			1SDA067439R1		1SDA067457R1		
63	1SDA067422R1 ■			1SDA067440R1 ■		1SDA067458R1		
80	1SDA067423R1 ■			1SDA067441R1		1SDA067459R1		
100	1SDA067424R1 ■		1SDA067442R1 ■		1SDA067460R1			
125	1SDA067427R1 ■	30,310	1SDA067445R1 ■	33,630	1SDA067463R1	39,880		
160	1SDA067428R1 ■	37,040	1SDA067446R1	37,500	1SDA067464R1	42,170		
XT3 250	200	3	1SDA068058R1 ■	38,700	1SDA068220R1 ■	41,100		
	250		1SDA068059R1 ■	39,830	1SDA068221R1 ■	42,230		
XT3 250	200	4	1SDA068069R1 ■	44,310	1SDA068231R1 ■	47,700		
	250		1SDA068070R1 ■	45,450	1SDA068232R1 ■	48,840		



*TMF trip unit

Note: ¹⁾ for XT1 Ics = 75% Icu and XT3 Ics = 50% Icu. ²⁾ for XT1 Ics = 50% Icu

■ Stock items

Tmax XT power distribution circuit breakers

Protection: TMD/TMA - 3 Pole

XT2/XT4/XT5/XT6

Breaking capacity at 415VAC

	Icu	Ics (Icu)
N	36kA	100%
S	50kA	100%
H	70kA	100%



TMD / TMA*			N		S		H				
Frame	In (A)	Poles	Ordering code	L.P.(₹)	Ordering code	L.P.(₹)	Ordering code	L.P.(₹)			
XT2 160	1.6	3	1SDA067000R1	21,700	1SDA067540R1	26,320	1SDA067584R1	32,650			
	2		1SDA067001R1		1SDA067541R1		1SDA067585R1				
	2.5		1SDA067002R1		1SDA067542R1		1SDA067586R1				
	3.2		1SDA067003R1		1SDA067543R1		1SDA067587R1				
	4		1SDA067004R1		1SDA067544R1		1SDA067588R1				
	5		1SDA067005R1		1SDA067545R1		1SDA067589R1				
	6.3		1SDA067006R1		1SDA067546R1		1SDA067590R1				
	8		1SDA067007R1		1SDA067547R1		1SDA067591R1				
	10		1SDA067008R1		1SDA067548R1 ■		1SDA067592R1				
	12.5		1SDA067009R1		1SDA067549R1		1SDA067593R1				
	16		1SDA067010R1 ■		1SDA067550R1 ■		1SDA067594R1				
	20		1SDA067011R1 ■		1SDA067551R1		1SDA067595R1				
	25		1SDA067012R1		1SDA067552R1 ■		1SDA067596R1				
	32		1SDA067013R1 ■		1SDA067553R1 ■		1SDA067597R1				
	40		1SDA067014R1 ■		19,900		1SDA067554R1 ■		23,520	1SDA067598R1	29,950
	50		1SDA067015R1		1SDA067555R1 ■		1SDA067599R1				
63	1SDA067016R1 ■	1SDA067556R1 ■	1SDA067600R1 ■								
80	1SDA067017R1	1SDA067557R1 ■	1SDA067601R1								
100	1SDA067018R1 ■	1SDA067558R1 ■	1SDA067602R1 ■								
125	1SDA067019R1 ■	29,650	1SDA067559R1 ■	34,920	1SDA067603R1 ■	54,880					
160	1SDA067020R1 ■	31,960	1SDA067560R1 ■	36,210	1SDA067604R1	56,470					
XT4 250	200	1SDA068090R1 ■	43,930	1SDA068310R1 ■	45,430	1SDA068343R1	61,920				
	225	1SDA068091R1	45,180	1SDA068311R1	47,430	1SDA068344R1	63,670				
	250	1SDA068092R1 ■	46,430	1SDA068312R1 ■	49,430	1SDA068345R1 ■	65,420				
	320	1SDA100344R1 ■	48,630	1SDA100414R1 ■	55,230	1SDA100484R1 ■	72,250				
XT5 630	400	1SDA100345R1 ■	50,950	1SDA100415R1 ■	56,960	1SDA100485R1 ■	74,250				
	500	1SDA100346R1 ■	64,790	1SDA100416R1 ■	73,160	1SDA100486R1 ■	94,150				
	630	1SDA100347R1 ■	74,720	1SDA100417R1 ■	79,730	1SDA100487R1 ■	98,220				
XT6 800	800	1SDA100718R1 ■	98,980	1SDA100740R1 ■	1,08,530	1SDA100762R1 ■	1,13,280				

* 40 A onwards

■ Stock items

Tmax XT power distribution circuit breakers

Protection: TMD/TMA - 4 Pole

XT2/XT4/XT5/XT6

Breaking capacity at 415VAC

	Icu	Ics (Icu)
N	36kA	100%
S	50kA	100%
H	70kA	100%



TMD / TMA*

			N		S		H				
Frame	In (A)	Poles	Ordering code	L.P.(₹)	Ordering code	L.P.(₹)	Ordering code	L.P.(₹)			
XT2160	1.6	4	1SDA067021R1	29,620	1SDA067561R1	32,330	1SDA067605R1	41,860			
	2		1SDA067022R1		1SDA067562R1		1SDA067606R1				
	2.5		1SDA067023R1		1SDA067563R1		1SDA067607R1				
	3.2		1SDA067024R1		1SDA067564R1		1SDA067608R1				
	4		1SDA067025R1		1SDA067565R1		1SDA067609R1				
	5		1SDA067026R1		1SDA067566R1		1SDA067610R1				
	6.3		1SDA067027R1		1SDA067567R1		1SDA067611R1				
	8		1SDA067028R1		1SDA067568R1		1SDA067612R1				
	10		1SDA067029R1		1SDA067569R1		1SDA067613R1				
	12.5		1SDA067030R1		1SDA067570R1		1SDA067614R1				
	16		1SDA067031R1		1SDA067571R1		1SDA067615R1				
	20		1SDA067032R1		1SDA067572R1		1SDA067616R1				
	25		1SDA067033R1		1SDA067573R1		1SDA067617R1				
	32		1SDA067034R1		1SDA067574R1 ■		1SDA067618R1				
	40		1SDA067035R1		24,960		1SDA067575R1		29,150	1SDA067619R1	38,400
	50		1SDA067036R1		1SDA067576R1		1SDA067620R1				
	63		1SDA067037R1 ■		1SDA067577R1 ■		1SDA067621R1				
	80		1SDA067038R1		1SDA067578R1		1SDA067622R1				
100	1SDA067039R1 ■	1SDA067579R1 ■	1SDA067623R1								
125	1SDA067042R1 ■	37,270	1SDA067582R1 ■	40,450	1SDA067626R1	57,680					
160	1SDA067043R1 ■	40,240	1SDA067583R1 ■	42,620	1SDA067627R1	58,890					
XT4 250	200	1SDA068109R1 ■	54,140	1SDA068329R1 ■	58,110	1SDA068362R1	78,440				
	225	1SDA068110R1	55,890	1SDA068330R1	60,360	1SDA068363R1	80,690				
	250	1SDA068111R1 ■	57,640	1SDA068331R1 ■	62,610	1SDA068364R1	82,940				
	320	1SDA100383R1 ■	62,180	1SDA100453R1 ■	70,360	1SDA100519R1 ■	87,940				
XT5 630	400	1SDA100385R1 ■	64,520	1SDA100455R1 ■	72,660	1SDA100521R1 ■	90,200				
	500	1SDA100387R1 ■	81,340	1SDA100457R1 ■	91,710	1SDA100523R1 ■	1,13,980				
	630	1SDA100389R1 ■	92,060	1SDA100459R1 ■	1,04,310	1SDA100525R1 ■	1,16,450				
XT6 800	800	1SDA100731R1 ■	1,05,660	1SDA100753R1 ■	1,25,390	1SDA100775R1 ■	1,32,150				

* 40 A onwards

Tmax XT power distribution circuit breakers

Protection: LS/I

XT2/XT4/XT5/XT6

Breaking capacity at 415VAC

	Icu	Ics (Icu)
N	36kA	100%
S	50kA	100%
H	70kA	100%



Tmax XT is the latest generation MCCB up to 1600 A / 690V AC

- Adjustable Overload, Selective short circuit/ Instantaneous Short circuit protection
- LEDs on the front provide type of fault indication information
- The trip unit records and stores trip history and event history
- Ekip Dip trip units include thermal memory function
- Communication of MCCB status possible on Modbus RTU/TCP using Ekip Com STA Module
- Front connector allows the connection of Ekip TT and Ekip T&P for testing and programming

XT2 / XT4 / XT5 / XT6

			N		S		H	
Frame	In (A)	Poles	Ordering code	L.P. (₹)	Ordering code	L.P. (₹)	Ordering code	L.P. (₹)
XT2 160	10	3	1SDA067054R1	35,300	1SDA067800R1	41,460	1SDA067857R1	46,960
	25		1SDA067055R1		1SDA067801R1		1SDA067858R1	
	63		1SDA067056R1		1SDA067802R1		1SDA067859R1	
	100		1SDA067057R1		1SDA067803R1		1SDA067860R1	
	160		1SDA067058R1		1SDA067804R1		1SDA067861R1	
XT4 250	250		1SDA068126R1	52,120	1SDA068475R1	59,490	1SDA068515R1	68,080
XT5 400	400		1SDA100354R1	79,320	1SDA100424R1	80,850	1SDA100490R1	92,850
XT5 630	630		1SDA100355R1	84,870	1SDA100425R1	85,420	1SDA100491R1	97,430
XT6 800	800		1SDA100719R1	1,05,250	1SDA100741R1	1,16,670	1SDA100763R1	1,40,620
XT2 160	10	4	1SDA067090R1	45,020	1SDA067833R1	52,940	1SDA067890R1	58,640
	25		1SDA067091R1		1SDA067834R1		1SDA067891R1	
	63		1SDA067092R1		1SDA067835R1		1SDA067892R1	
	100		1SDA067093R1		1SDA067836R1		1SDA067893R1	
	160		1SDA067095R1		1SDA067838R1		1SDA067895R1	
XT4 250	250		1SDA068147R1	73,610	1SDA068495R1	78,140	1SDA068535R1	89,490
XT5 400	400		1SDA100396R1	89,240	1SDA100466R1	1,05,280	1SDA100528R1	1,20,000
XT5 630	630		1SDA100397R1	1,04,230	1SDA100467R1	1,12,560	1SDA100529R1	1,49,380
XT6 800	800		1SDA100732R1	1,18,920	1SDA100754R1	1,46,280	1SDA100776R1	1,74,070

■ Stock items

Tmax XT power distribution circuit breakers

Protection: LIG

XT2/XT4/XT5/XT6

Breaking capacity at 415VAC

	Icu	Ics (Icu)
N	36kA	100%
S	50kA	100%
H	70kA	100%



Tmax XT is the latest generation product up to 1600 A / 690V AC

- Adjustable Overload, Instantaneous short circuit and Ground fault protection
- LEDs on the front provide type of fault indication information
- The trip unit records and stores trip history and event history
- Ekip Dip trip units include thermal memory function
- Communication of MCCB status possible Modbus RTU/TCP using Ekip Com STA Module
- Front connector allows the connection of Ekip TT, Ekip T&P for testing and programming

Tmax XT Ekip LIG

Ekip LIG		
Frame	In (A)	Poles
XT2 160	63	3
	100	
	160	
XT4 250	250	3
XT5 630	400	3
	630	
XT6 800	800	3
	800	
XT2 160	63	4
	100	
	160	
XT4 250	250	4
XT5 630	400	4
	630	
XT6 800	800	4

N Version (Icu=Ics=36kA @ 415 V AC)	
Ordering Code	L.P.(₹)
1SDA100012R1 ■	46,140
1SDA100013R1 ■	
1SDA100014R1 ■	
1SDA100185R1 ■	53,360
1SDA100380R1	77,660
1SDA100381R1	82,690
1SDA100728R1	1,18,710
1SDA100027R1 ■	53,690
1SDA100028R1 ■	
1SDA100029R1 ■	64,960
1SDA100200R1 ■	75,180
1SDA100412R1	87,270
1SDA100413R1	1,01,780
1SDA100738R1	1,44,580

S Version (Icu=Ics=50kA @ 415 V AC)	
Ordering Code	L.P.(₹)
1SDA100042R1 ■	50,230
1SDA100043R1 ■	
1SDA100044R1 ■	60,260
1SDA100215R1 ■	66,980
1SDA100450R1	79,210
1SDA100451R1	87,680
1SDA100750R1	1,37,130
1SDA100057R1 ■	58,760
1SDA100058R1 ■	
1SDA100059R1 ■	71,930
1SDA100230R1 ■	78,200
1SDA100482R1	92,030
1SDA100483R1	1,10,190
1SDA100760R1	1,63,220

H Version (Icu=Ics=70kA @ 415 V AC)	
Ordering Code	L.P.(₹)
1SDA100072R1 ■	59,970
1SDA100073R1 ■	
1SDA100074R1 ■	68,670
1SDA100245R1 ■	79,120
1SDA100516R1	1,07,550
1SDA100517R1	1,12,990
1SDA100772R1	1,65,290
1SDA100087R1 ■	71,870
1SDA100088R1 ■	
1SDA100089R1 ■	83,780
1SDA100260R1 ■	97,040
1SDA100544R1	1,15,980
1SDA100545R1	1,50,760
1SDA100782R1	2,06,590

■ Stock items

Tmax XT power distribution circuit breakers

Protection: Dip LSIG

XT2/XT4/XT5/XT6

Breaking capacity at 415VAC

	Icu	Ics (Icu)
N	36kA	100%
S	50kA	100%
H	70kA	100%



Tmax XT is the latest generation product up to 1600 A / 690V AC

- IEC 60947-2 certification
- Adjustable Overload, Selective short circuit, Instantaneous short circuit and Ground fault protection
- LEDs on the front provide type of fault indication information
- The trip unit records and stores trip history and event history
- Ekip Dip trip units include thermal memory function
- Communication of MCCB status possible Modbus RTU/TCP using Ekip Com STA Module
- Front connector allows the connection of Ekip TT, Ekip T&P for testing and programming

Tmax XT Ekip Dip LSIG

			N		S		H	
Frame	In (A)	Poles	Ordering code	L.P. (₹)	Ordering code	L.P. (₹)	Ordering code	L.P. (₹)
XT2 160	10	3	1SDA100005R1	70,680	1SDA100035R1	75,080	1SDA100065R1	85,250
	25		1SDA100006R1		1SDA100036R1		1SDA100066R1	
	63		1SDA100007R1	68,680	1SDA100037R1	73,080	1SDA100067R1	83,250
	100		1SDA100008R1		1SDA100038R1		1SDA100068R1	
	160		1SDA100009R1		1SDA100039R1		1SDA100069R1	
XT4 250	250	3	1SDA100180R1	76,550	1SDA100210R1	80,360	1SDA100240R1	90,270
	320A		1SDA100361R1	99,270	1SDA100431R1	1,02,410	1SDA100497R1	1,15,650
XT5 630	400A	3	1SDA100362R1	1,01,630	1SDA100432R1	1,04,770	1SDA100498R1	1,17,940
	630A		1SDA100363R1	1,11,850	1SDA100433R1	1,14,230	1SDA100499R1	1,29,510
XT6 800	800A	3	1SDA100723R1	1,47,500	1SDA100745R1	1,55,790	1SDA100767R1	1,77,290
XT2 160	10	4	1SDA100020R1	78,080	1SDA100050R1	80,950	1SDA100080R1	89,840
	25		1SDA100021R1		1SDA100051R1		1SDA100081R1	
	63		1SDA100022R1	76,080	1SDA100052R1	78,950	1SDA100082R1	87,840
	100		1SDA100023R1		1SDA100053R1		1SDA100083R1	
	160		1SDA100024R1		1SDA100054R1		1SDA100084R1	
XT4 250	250	4	1SDA100195R1	94,850	1SDA100225R1	96,190	1SDA100255R1	1,15,130
	320A		1SDA100403R1	1,12,160	1SDA100473R1	1,15,620	1SDA100535R1	1,24,880
XT5 630	400A	4	1SDA100404R1	1,14,160	1SDA100474R1	1,17,620	1SDA100536R1	1,26,880
	630A		1SDA100405R1	1,34,320	1SDA100475R1	1,40,070	1SDA100537R1	1,63,610
XT6 800	800A	4	1SDA100736R1	1,65,290	1SDA100758R1	1,79,390	1SDA100780R1	2,24,630

■ Stock items

Tmax XT power distribution circuit breakers

Protection: LS/I, LSIG

- IEC 60947-2 certification
- Rating available upto 1600A
- Performance upto 100kA
- For motorized version consider XT7M & Motor operator

XT7

Breaking capacity at 415VAC

	Icu	Ics (Icu)
S	50kA	100%
H	70kA	100%

XT7 Ekip Dip LS/I

Frame	In (A)	Poles	S		H	
			Ordering code	L.P. (₹)	Ordering code	L.P. (₹)
XT7	800A	3	1SDA100826R1	Upon request	1SDA100890R1	Upon request
	1000A		1SDA100827R1		1SDA100891R1	
	1250A		1SDA100828R1		1SDA100892R1	
	1600A		1SDA100829R1		1SDA100893R1	
	800A	4	1SDA101114R1	Upon request	1SDA101170R1	Upon request
	1000A		1SDA101115R1		1SDA101171R1	
	1250A		1SDA101116R1		1SDA101172R1	
	1600A		1SDA101117R1		1SDA101173R1	

XT7 Ekip Dip LSIG

Frame	In (A)	Poles	S		H	
			Ordering code	L.P. (₹)	Ordering code	L.P. (₹)
XT7	800A	3	1SDA100834R1	Upon request	1SDA100898R1	Upon request
	1000A		1SDA100835R1		1SDA100899R1	
	1250A		1SDA100836R1		1SDA100900R1	
	1600A		1SDA100837R1		1SDA100901R1	
	800A	4	1SDA101122R1	Upon request	1SDA101178R1	Upon request
	1000A		1SDA101123R1		1SDA101179R1	
	1250A		1SDA101124R1		1SDA101180R1	
	1600A		1SDA101125R1		1SDA101181R1	

XT7M Ekip Dip LS/I

Frame	In (A)	Poles	S		H	
			Ordering code	L.P. (₹)	Ordering code	L.P. (₹)
XT7M	800A	3	1SDA101366R1	Upon request	1SDA101430R1	Upon request
	1000A		1SDA101367R1		1SDA101431R1	
	1250A		1SDA101368R1		1SDA101432R1	
	1600A		1SDA101369R1		1SDA101433R1	
	800A	4	1SDA101654R1	Upon request	1SDA101710R1	Upon request
	1000A		1SDA101655R1		1SDA101711R1	
	1250A		1SDA101656R1		1SDA101712R1	
	1600A		1SDA101657R1		1SDA101713R1	

XT7M Ekip Dip LSIG

Frame	In (A)	Poles	S		H	
			Ordering code	L.P. (₹)	Ordering code	L.P. (₹)
XT7M	800A	3	1SDA101374R1	Upon request	1SDA101438R1	Upon request
	1000A		1SDA101375R1		1SDA101439R1	
	1250A		1SDA101376R1		1SDA101440R1	
	1600A		1SDA101377R1		1SDA101441R1	
	800A	4	1SDA101662R1	Upon request	1SDA101718R1	Upon request
	1000A		1SDA101663R1		1SDA101719R1	
	1250A		1SDA101664R1		1SDA101720R1	
	1600A		1SDA101665R1		1SDA101721R1	



* For XT7, XT7M Ekip Dip LIG MCCBs ordering code, refer Tmax XT technical catalogue

Tmax XT power distribution circuit breakers

Protection: C Dip L SIG

XT2/XT4/XT5/XT6

Breaking capacity at 415VAC

	Icu	Ics (Icu)
N	36kA	100%
S	50kA	100%
H	70kA	100%



Tmax XT C Dip L SIG is the latest generation product up to 250 A / 690V AC

- IEC 60947-2 certification
- Adjustable Overload, Selective short circuit, Instantaneous short circuit and Ground fault protection
- LEDs on the front provide type of fault indication information
- The trip unit records and stores trip history and event history
- Ekip Dip trip units include thermal memory function
- Communication of MCCB status & release data possible with C Dip Modbus RTU module
- Front connector allows the connection of Ekip TT, Ekip T&P for testing and programming

XT2 / XT4 Ekip C Dip L SIG (Communication capable)

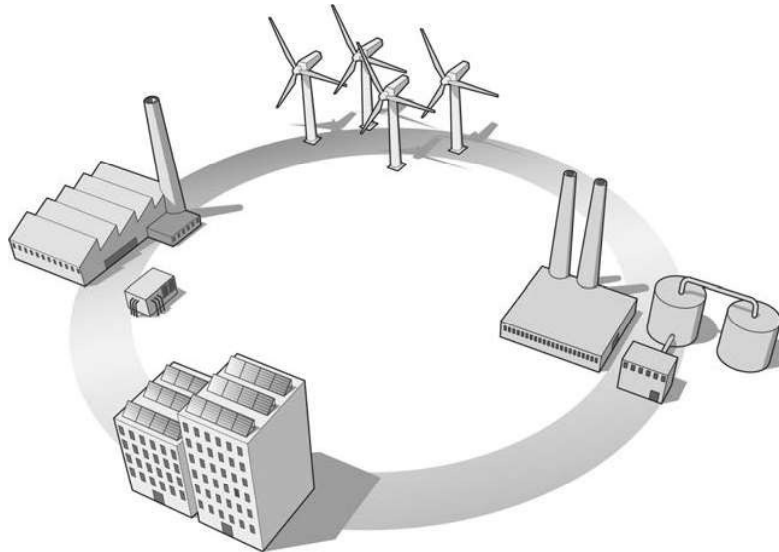
			N		S		H	
Frame	In (A)	Poles	Ordering code	L.P. (₹)	Ordering code	L.P. (₹)	Ordering code	L.P. (₹)
XT2 160	25	3	1SDX272178R1	75,180	1SDX356683R1	79,580	1SDX357425R1	89,750
	63		1SDX268780R1	73,180	1SDX268791R1	77,580	1SDX268803R1	87,750
	100		1SDX268782R1		1SDX268793R1		1SDX268805R1	
	160		1SDX268781R1	77,360	1SDX268795R1	82,610	1SDX268807R1	91,270
XT4 250	250		1SDX268811R1	81,050	1SDX268816R1	84,860	1SDX268820R1	94,770
XT2 160	25	4	1SDX356687R1	82,580	1SDX356691R1	85,450	1SDX357427R1	94,340
	63		1SDX356689R1	80,580	1SDX356692R1	83,450	1SDX356709R1	92,340
	100		1SDX356695R1		1SDX356694R1		1SDX356710R1	
	160		1SDX356690R1	85,870	1SDX356693R1	87,720	1SDX356711R1	1,16,390
XT4 250	250		1SDX356716R1	99,350	1SDX356717R1	1,00,690	1SDX356718R1	1,19,630

Tmax XT Power distribution circuit breakers

Connectivity with Tmax XT

The following table provides a frame level overview of the communication capabilities available for Tmax XT MCCBs.

- The Stand-Alone communication module (Modbus RTU or Modbus TCP) can be installed inside the circuit breaker to enable basic communication functions, such as status monitoring and remote control.
- The Ekip C Dip trip unit enhances these capabilities by allowing the transmission of release information in addition to status data through a dedicated Modbus RTU protocol.
- For advanced communication requirements, Ekip Touch trip units offer a comprehensive set of features, enabling detailed data exchange and extended integration options.



Circuit Breaker	Trip unit Type	Module	Protocol
XT2-XT4	Switch disconnecter Thermomag Ekip Dip	Ekip Com STA	Modbus RTU
	Ekip C Dip	Ekip Com C Dip	Modbus RTU
	Ekip Touch / Hi-Touch	Ekip Com	Modbus RTU Modbus TCP Profinet Ethernet/IP IEC61850 DeviceNet Profibus-DP
XT5	Switch disconnecter Thermomag Ekip Dip	Ekip Com STA	Modbus RTU Modbus TCP
	Ekip Touch / Hi-Touch	Ekip Com	Modbus RTU Modbus TCP Profinet Ethernet/IP IEC61850 DeviceNet Profibus-DP
XT7-XT7M	Switch disconnecter Ekip Dip	-	-
	Ekip Touch / Hi-Touch	Ekip Com	Modbus RTU Modbus TCP Profinet Ethernet/IP IEC61850 DeviceNet Profibus-DP

Note: Check compatibility of communication module with internal accessories from Tmax XT technical catalogue

Tmax XT Power distribution circuit breakers

Breaking new grounds : Ekip Touch series

XT2 / XT4 (LCD display)



XT5 (Touch display)



- **Communication and connectivity:** Supports 7 onboard communication protocols :
 Modbus RTU
 Modbus TCP
 Profibus
 Profinet
 Ethernet/IP
 Devicenet
 IEC61850
- **Digital upgrade:** Digital upgrading of measurements and protections using software package
- **Ease of use Interface:** LCD display for XT2/XT4 and Touch display for XT5. BLE (Bluetooth low energy enabled)
- **Commissioning:** The setting, testing and downloading of reports can be carried out directly from a smartphone, tablet or PC
- **Watchdog:** Tmax XT ensure high reliability thanks to an electronic circuit that periodically checks the continuity of the internal connections, such as the trip coil, rating plug and each current sensor (ANSI 74). In the event of an alarm, a message is shown on the display.
- **Internal over temperature protection:** Ekip Touch/ Ekip Touch measuring also features self-protection, which ensures the correct operation of the unit in overtemperatures (OT) inside the protection trip unit.
- **Maintenance features:**
 Information of last 30 trips and 200 events.
 No. of mechanical operations. Total operating time (in hours).
 Contact wear and tear in %.
 Date of maintenance operations performed.
 Indication of maintenance operation needed.
 Failure of circuit-breaker to open (ANSI 50BF)

Protections

- L,S,I & G protections
- Neutral protection
- 2nd instantaneous protection (2I)
- MCR (making current release) - Closing on short circuit protection
- Current unbalance
- Harmonic distortion
- 2nd time delayed over current protection (S2)
- Current thresholds
- ROCOF (Rate of change of frequency)
- Synchrocheck
- Residual current protection (Rc)

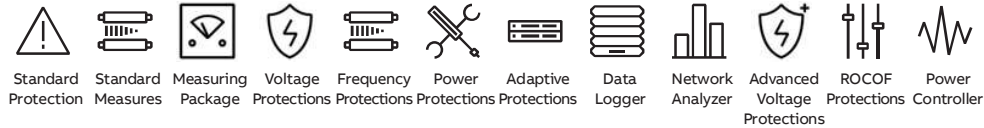


Instantaneous measurements			Ekip Touch	Ekip Touch Measuring
Currents (RMS)	L1, L2, L3, Ne	[A]	●	●
Ground fault current (RMS)	Ig	[A]	●	●
Measuring package				
Phase-phase voltage (RMS)	U12, U23, U31	[V]	○	●
Phase-neutral voltage (RMS)	U1, U2, U3	[V]	○	●
Phase sequence			○	●
Frequency	f	[Hz]	○	●
Active power	P1, P2, P3, Ptot	[kW]	○	●
Reactive power	Q1, Q2, Q3, Qtot	[kVAR]	○	●
Apparent power	S1, S2, S3, Stot	[KVA]	○	●
Power factor	PF1, PF2, PF3, PF total		○	●
Peak factor	total		○	●
Active energy	Ep total, Ep positive, Ep negative	[kWh]	○	●
Reactive energy	Eq total, Ep positive, Ep negative	[kVARh]	○	●
Apparent energy	Es total	[KVAh]	○	●

● Available as standard
 ○ Available as software package to be ordered via offline software activation or during the circuit-breaker ordering phase

Tmax XT Power distribution circuit breakers

Breaking new grounds : Ekip Touch series



	Standard Protection	Standard Measures	Measuring Package	Voltage Protections	Frequency Protections	Power Protections	Adaptive Protections	Data Logger	Network Analyzer	Advanced Voltage Protections	ROCOF Protections	Power Controller
Ekip Touch	●	●	↑	↑	↑	↑	↑	↑	↑	↑	↑	↑
Ekip Touch Measuring	●	●	●	↑	↑	↑	↑	↑	↑	↑	↑	↑
Ekip G Touch	●	●	●	↑	↑	↑	↑	●	↑	↑	↑	↑
Ekip M Touch	●	●	●	●	●	↑	●	↑	↑	↑	↑	↑
Ekip Hi-Touch	●	●	●	●	●	↑	●	●	●	↑	↑	↑
Ekip G Hi-Touch	●	●	●	●	●	●	●	●	●	●	●	↑

● Available by default
 ↑ Updraggable
 ↑ Some functions available. Upgradable with the full package.

Ekip Touch LSIG

			N		S		H		
Frame	Current rating	No. of poles	Ordering code	L.P.(₹)	Ordering code	L.P.(₹)	Ordering code	L.P.(₹)	
XT2	100A	3	1SDX048780R1		1SDX048814R1		1SDX048850R1		
	160A		1SDX048781R1		1SDX048815R1		1SDX048851R1		
XT4	250A		1SDX049224R1		1SDX049232R1		1SDX049241R1		
	320A		1SDX049830R1		1SDX049906R1		1SDX049982R1		
XT5	400A		1SDX049831R1		1SDX049907R1		1SDX049983R1		
	630A		1SDX049857R1		1SDX049933R1		1SDX050009R1		
XT7	800A		1SDA100842R1		1SDA100842R1		1SDA100906R1		
	1000A		1SDA100843R1		1SDA100843R1		1SDA100907R1		
	1250A		1SDA100844R1		1SDA100844R1		1SDA100908R1		
	1600A		1SDA100845R1	Upon request	1SDA100845R1	Upon request	1SDA100909R1	Upon request	
XT2	100A		4	1SDX049027R1	Upon request	1SDX049055R1	Upon request	1SDX049083R1	Upon request
	160A			1SDX049028R1		1SDX049056R1		1SDX049084R1	
XT4	250A	1SDX049268R1			1SDX049275R1		1SDX049282R1		
	320A	1SDX049870R1			1SDX049946R1		1SDX050022R1		
XT5	400A	1SDX049871R1			1SDX049947R1		1SDX050023R1		
	630A	1SDX049894R1			1SDX049970R1		1SDX050046R1		
XT7*	800A	1SDA101130R1			1SDA101130R1		1SDA101186R1		
	1000A	1SDA101131R1			1SDA101131R1		1SDA101187R1		
	1250A	1SDA101132R1			1SDA101132R1		1SDA101188R1		
	1600A	1SDA101133R1			1SDA101133R1		1SDA101189R1		

Ekip Touch measuring LSIG

			N		S		H		
Frame	Current rating	No. of poles	Ordering code	L.P.(₹)	Ordering code	L.P.(₹)	Ordering code	L.P.(₹)	
XT2	100A	3	1SDX048788R1		1SDX048822R1		1SDX048858R1		
	160A		1SDX048789R1		1SDX048823R1		1SDX048859R1		
XT4	250A		1SDX049226R1		1SDX049234R1		1SDX049243R1		
	320A		1SDX049836R1		1SDX049912R1		1SDX049988R1		
XT5	400A		1SDX049837R1		1SDX049913R1		1SDX049989R1		
	630A		1SDX049859R1		1SDX049935R1		1SDX050011R1		
XT7	800A		1SDA100850R1		1SDA100850R1		1SDA100914R1		
	1000A		1SDA100851R1		1SDA100851R1		1SDA100915R1		
	1250A		1SDA100852R1		1SDA100852R1		1SDA100916R1		
	1600A		1SDA100853R1	Upon request	1SDA100853R1	Upon request	1SDA100917R1	Upon request	
XT2	100A		4	1SDX049035R1	Upon request	1SDX049063R1	Upon request	1SDX049091R1	Upon request
	160A			1SDX049036R1		1SDX049064R1		1SDX049092R1	
XT4	250A	1SDX049268R1			1SDX049277R1		1SDX049284R1		
	320A	1SDX049876R1			1SDX049952R1		1SDX050028R1		
XT5	400A	1SDX049877R1			1SDX049953R1		1SDX050029R1		
	630A	1SDX049896R1			1SDX049972R1		1SDX050048R1		
XT7*	800A	1SDA101138R1			1SDA101138R1		1SDA101194R1		
	1000A	1SDA101139R1			1SDA101139R1		1SDA101195R1		
	1250A	1SDA101140R1			1SDA101140R1		1SDA101196R1		
	1600A	1SDA101141R1			1SDA101141R1		1SDA101197R1		

* for motorized version please contact nearest branch office

Tmax XT circuit breakers

MCCB for motor protection

Type	I _n (40° C) [A]	U _e [V]		Category	Release	I _{cu} (380 - 415 V AC) [kA]										
		AC	DC			16	25	36	50	70	85	100	120	150	200	
XT1	160	690	500	A	MF/MA	B	C	N	S	H						
XT2	160	690	500	A	MF/MA Ekip M Dip I / Dip LIU Ekip M Touch LRIU			N	S	H		L	V			
XT3	250	690	500	A	MF/MA			N	S							
XT4	250	690	750	A	MA Ekip M Dip I / Dip LIU Ekip M Touch LRIU			N	S	H		L	V	X		
XT5	400 630	690	750	B (500 A) A (630 A)	MA Ekip M Dip I / Dip LIU Ekip M Touch LRIU			N	S	H		L			V, X	
XT6	630 800	690	750	B (630A - 800 A)	Ekip M Dip I / Dip LIU			N	S	H						
XT7 / XT7M	1000 1250 1600	690		B	Ekip M Dip I Ekip M Touch LRIU				S	H		L				

Trip Units

Magnetic trip units

- MF - Magnetic only trip unit with fixed magnetic thresholds for motor protection
- MA - Magnetic only trip unit with adjustable magnetic thresholds for motor protection

Microprocessor based electronic trip units

Ekip M Dip I	I = 1 - 10 I _n	Ekip M Dip LIU	L = 0.40 - 1 I _n	Ekip M Touch LRIU	L = 0.4 - 1 I _n
			I = 6 - 13 I _n		R = 2 - 10 I _l *
U = On/Off	I = 1.5 - 10 I _n ⁽¹⁾	U = On/Off			

L = Overload I = Instantaneous short circuit

R = Blocked rotor

U = phase loss (U): With selector in ON position, circuit breaker trips if at least one current phase is lower than 0.1xI_n and at least a second one higher than 0.25xI_n;

Note: For detailed information about trip units, refer technical catalogue.

* Setting for rotor blockage - stall, refer technical catalogue.

⁽¹⁾ for XT7 Touch, I = 1.5 to 15 I_n, G = 0.1 to 1 I_n

Tmax XT motor distribution circuit breakers

Protection: Magnetic only and Microprocessor based short circuit protection MCCBs

XT2/XT4/XT5/XT6

Breaking capacity at 415VAC

	Icu	Ics (Icu)
N	36kA	100%
S	50kA	100%
H	70kA	100%

XT3

Breaking capacity at 415VAC

	Icu	Ics (Icu)
N	36kA	100%
S	50kA	50%



MF/MA*

Frame	In (A)	Poles	N		S		H	
			Ordering code	L.P. (₹)	Ordering code	L.P. (₹)	Ordering code	L.P. (₹)
XT2 160	1	3	1SDA067044R1		1SDA067760R1		1SDA067770R1	
	2		1SDA067045R1		1SDA067761R1		1SDA067771R1	
	4		1SDA067046R1	21,810	1SDA067762R1	23,550	1SDA067772R1	26,450
	8.5		1SDA067047R1		1SDA067763R1 ■		1SDA067773R1	
	12.5		1SDA067048R1 ■		1SDA067764R1 ■		1SDA067774R1	
	20		1SDA067049R1 ■		1SDA067765R1 ■		1SDA067775R1	
	32		1SDA067050R1 ■		1SDA067766R1 ■		1SDA067776R1	
	52		1SDA067051R1 ■	21,510	1SDA067767R1 ■	23,200	1SDA067777R1	25,400
	80		1SDA067052R1 ■		1SDA067768R1 ■		1SDA067778R1	
	100		1SDA067053R1 ■		1SDA067769R1 ■		1SDA067779R1	
XT3 250	160		1SDA076529R1	31,420	1SDA076530R1 ■	34,280	1SDA076535R1	43,720
	100		1SDA068071R1		1SDA068279R1			
	125		1SDA068072R1	26,460	1SDA068280R1	27,500		
	160		1SDA068073R1		1SDA068281R1			
XT4 250	200		1SDA068074R1	30,250	1SDA068282R1 ■	31,120		
	320		1SDA068121R1	54,050	1SDA068440R1 ■	58,790	1SDA068450R1	71,190
XT5 630	400		1SDA100364R1	56,280	1SDA100434R1	60,360	1SDA100500R1	73,190
	630		1SDA100365R1		1SDA100435R1	60,930	1SDA100501R1	73,760
	630		1SDA100366R1	65,820	1SDA100436R1	74,990	1SDA100502R1	95,740

* 20 amps onwards

Ekip M Dip I

Frame	In (A)	Poles	N		S		H	
			Ordering code	L.P. (₹)	Ordering code	L.P. (₹)	Ordering code	L.P. (₹)
XT2 160	10	3	1SDA067059R1		1SDA067805R1		1SDA067862R1	
	25		1SDA067060R1		1SDA067806R1		1SDA067863R1	
	63		1SDA067061R1	29,510	1SDA067807R1	35,300	1SDA067864R1	38,060
	100		1SDA067062R1		1SDA067808R1		1SDA067865R1	
XT4 250	160		1SDA067063R1	36,340	1SDA067809R1	47,470	1SDA067866R1	51,740
	250		1SDA068131R1 ■	55,740	1SDA068480R1 ■	60,450	1SDA068520R1	72,330
XT5 630	400		1SDA100368R1	63,710	1SDA100438R1 ■	90,560	1SDA100504R1	1,28,160
	630		1SDA100369R1	78,730	1SDA100439R1 ■	1,11,950	1SDA100505R1	1,58,420
XT6 800	630		1SDA107565R1	1,04,680	1SDA107578R1	1,47,250	1SDA107591R1	2,07,130
	800		1SDA100725R1	1,09,680	1SDA100747R1	1,52,250	1SDA100769R1	2,12,130

■ Stock items

Tmax XT switch disconnectors

SACE Tmax XT switch-disconnectors

- IEC 60947-3 certification utilization category
- These devices are mainly used as:
 - General disconnection devices in sub-switchboards;
 - Switching and insulation devices for lines, busbars or groups of apparatus;
 - Bus ties.
- Switch-disconnector must be protected on the supply side by a coordinated device which safeguards it against short-circuits.
- Able to withstand The dynamic, thermal and current stresses with the right Making capacity(Icm)



Frame	In(A)	Icw kA (1s)	Poles	Ordering code	L.P.(₹)	Poles	Ordering code	L.P.(₹)
XT1D	160	2		1SDA068208R1	15,080		1SDA068209R1	22,260
XT3D	250	3		1SDA068210R1	33,060		1SDA068211R1	39,480
XT4D	250	3.6		1SDA068212R1	37,700		1SDA068213R1	49,970
XT5D	400	3.6		1SDA100546R1	54,690		1SDA100548R1	58,940
	630	3.6		1SDA100547R1	61,480		1SDA100549R1	75,010
XT6D	800	15	3	1SDA100784R1	73,570	4	1SDA100786R1	1,27,830
	1000	20		1SDA101906R1			1SDA101909R1	
XT7D	1250	20		1SDA101907R1			1SDA101910R1	
	1600	20		1SDA101908R1	Upon request		1SDA101911R1	Upon request
	1000	20		1SDA101912R1		1SDA101915R1		
XT7D M	1250	20		1SDA101913R1		1SDA101916R1		
	1600	20		1SDA101914R1	1SDA101917R1			

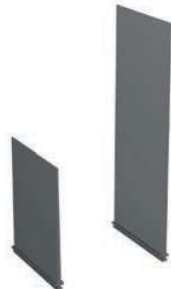
Tmax XT accessories



Accessories for Tmax MCCBs Extended spreaded terminals - ES

Frame	Kit ES 6 pcs	L.P. (₹)	Kit ES 8 pcs	L.P. (₹)
XT1	1SDA066891R1 ■	3,450	1SDA066892R1 ■	4,600
XT2	1SDA066895R1 ■	4,690	1SDA066896R1 ■	5,710
XT3	1SDA066899R1 ■	5,020	1SDA066900R1 ■	6,400
XT4	1SDA066903R1 ■	5,790	1SDA066904R1 ■	7,250
XT5	1SDA104738R1 (1/2 kit) ⁽¹⁾	4,070	1SDA104739R1 (1/2 kit) ⁽²⁾	5,400
XT6	1SDA113127R1 (Lower)	Upon request	1SDA104741R1 (1/2 Kit) ⁽²⁾	Upon request
	1SDA104740R1 (Upper)			
XT7-XT7M	1SDA073979R1 (1/2 Kit) ⁽¹⁾	Upon request	1SDA073980R1 (1/2 Kit) ⁽²⁾	Upon request

Note: Phase barrier supplied as standard with above copper spreaders.
(1) Code is for 3 pcs, if required for both top & bottom side order 2 quantities
(2) Code is for 4 pcs, if required for both top & bottom side order 2 quantities



Separator - PB

Frame	Description	3 P - 4 pcs	L.P. (₹)	4 P - 6 pcs	L.P. (₹)
XT1-XT3	PB 100mm XT1-XT3	1SDA066676R1	1,360	1SDA066681R1	1,990
	PB 200mm XT1-XT3	1SDA066678R1	1,790	1SDA066683R1	2,590
XT2-XT4	PB 100mm XT2-XT4	1SDA066675R1	1,520	1SDA066680R1	2,270
	PB 200mm XT2-XT4	1SDA066677R1 ■	2,270	1SDA066682R1	3,300
XT5	PB 100mm XT5	1SDA105002R1	1,670	1SDA105003R1	2,500
	PB 200mm XT5	1SDA105004R1	2,500	1SDA105005R1	3,630
XT6	PB 100mm XT6	1SDA105010R1	1,720	1SDA105011R1	2,750
	PB 200mm XT6	1SDA105012R1	2,960	1SDA105013R1	3,990



Auxiliary contact - AUX (Uncabled version)

Frame	Description	Ordering code	L.P. (₹)
XT1....XT6	AUX 1Q 250Vac/dc XT1...XT6	1SDA066422R1 ■	1,790
	AUX 1Q 24Vdc XT1...XT6	1SDA066423R1	2,710



Electrical signals

Auxiliary contact cabled-version - AUX - C

Frame	Description	Ordering code	L.P. (₹)
XT1....XT6	AUX-C 1Q+1SY 250V AC/DC XT1...XT6 F/P	1SDA066431R1 ■	3,030
	AUX-C 2Q+1SY 250VAC/DC XT1...XT6 F/P	1SDA066433R1 ■	4,770
	AUX-C 3Q+1SY 250VAC/DC XT2...XT6 F/P	1SDA066434R1 ■	5,900
	AUX-C 1Q+1SY 24Vdc XT1...XT6 F/P	1SDA066446R1 ■	3,770
	AUX-C 3Q+1SY 24VDC XT2...XT6 F/P	1SDA066448R1	5,930
XT2....XT4	AUX-C 3Q+2SY 250VAC/DC XT2-XT4 F/P	1SDA066436R1	7,220
	AUX-C 2Q+2SY+1S51 250VAC/DC XT2-XT4 F/P	1SDA066438R1	7,920
	AUX-C 2Q 400V AC XT2-XT4 F/P	1SDA066440R1	3,770
XT5	AUX-C 1Q+1SY 400Vac XT2-XT4 F/P	1SDA066444R1	5,930
	AUX-C 1Q + 1SY 400V AC/DC XT5 F/P	1SDA104784R1	8,810
	AUX-C 2Q 400V AC/DC XT5 F/P	1SDA104795R1	7,340
XT7-XT7M	AUX 4Q 400V	1SDA073750R1	Upon request
	S51 250V	1SDA073776R1	Upon request

Note : Q=Changeover contact;SY/S51= Trip indication contact ;F/P: Fixed/Plug-in ; W:Withdrawable, for W Aux contact ordering code, refer Tmax XT technical catalogue



IP54 Protection for rotary handle

Frame	Description	Ordering code	L.P. (₹)
XT1....XT4	IP54 Protection for RHE	1SDA066587R1	3,850
XT5	IP54 Protection for RHD	1SDA104876R1	27,740
XT6	IP54 Protection for RHD	1SDA104877R1	30,510
XT7	IP54 Protection for RHD	1SDA104878R1	Upon Request

■ Stock items

Tmax XT accessories



Rotary handle operating mechanism

Frame	RHD	L.P. (₹)	RHE	L.P. (₹)
XT1-XT3 F/P (250mm rod)	1SDA066475R1 ■	3,130	1SDA082810R1 ■	2,880
XT1-XT3 F/P (500mm rod)			1SDA066479R1	3,280
XT2-XT4 F/P (250mm rod)	1SDA069053R1 ■	3,720	1SDA082811R1 ■	3,780
XT2-XT4 F/P (500mm rod)			1SDA069055R1	4,190
XT2-XT4 F/P-Left Lateral			1SDA069058R1	6,660
XT2-XT4 F/P-Right Lateral			1SDA069060R1	6,570
XT5 F/P	1SDA104826R1	6,720	1SDA104843R1	6,500
XT6 F/P	1SDA104832R1	9,020	1SDA104853R1	13,500
XT7 F/W	1SDA104838R1	17,480	1SDA104863R1	19,340

Note:- F/P: Fixed/Plug-in ; W:Withdrawable

Service releases

Shunt opening release - SOR



Frame	Description	Uncabled	L.P. (₹)	Cabled	L.P. (₹)
XT1... XT4	24-30 V AC/DC F/P	1SDA066314R1 ■	4,150	1SDA066322R1	6,300
	110...127V AC / 110...125V DC F/P	1SDA066316R1		1SDA066324R1	
	220...240 V ac-220...250 V DC F/P	1SDA066317R1 ■		1SDA066325R1	
	380-440 V ac F/P	1SDA066318R1		1SDA066326R1	
XT5-XT6	24...60V AC/DC F/P	1SDA104925R1	7,870	1SDA104933R1	15,580
	110...240Vac-110...250Vdc F/P	1SDA104926R1		1SDA104934R1	
XT7-XT7M	24...60V AC/DC	1SDA073668R1	Upon request		
	110...120V AC/DC	1SDA073672R1			
	220...240V AC/DC	1SDA073674R1			

Note: F/P: Fixed/Plug-in

Under voltage release - UVR



Frame	Description	Uncabled	L.P. (₹)	Cabled	L.P. (₹)
XT1...XT4	24-30 VAC/DC F/P	1SDA066389R1	7,630	1SDA066396R1	11,880
	110...127V AC / 110...125V DC F/P	1SDA066391R1		1SDA066398R1	
	220-240Vac-220-250V DC F/P	1SDA066392R1 ■		1SDA066399R1 ■	
	380-440 V AC F/P	1SDA066393R1 ■		1SDA066400R1	
XT5-XT6	24V AC/DC F/P	1SDA104941R1	16,080	1SDA104955R1	18,180
	110..127V AC - 110..125V DC Vac/dc F/P	1SDA104943R1		1SDA104957R1	
	220...240V AC-220...250V DC F/P	1SDA104944R1		1SDA104958R1	
	380...440V AC F/P	1SDA104945R1		1SDA104959R1	
XT7-XT7M	24...60V AC/DC	1SDA073694R1	Upon Request		
	110..120V AC/DC	1SDA073698R1			
	220...240V AC/DC	1SDA073700R1			

Note: F/P: Fixed/Plug-in

Accessories for Ekip Dip trip units

Frame	Description	Ordering code	L.P. (₹)
XT2-XT4	EKIP COM RTU for XT2-XT4 Ekip C Dip F/P	1SDA122799R1	30,800
	KIT x CONNECTION Vaux 24Vdc XT2-XT4 F/P	1SDA066980R1	6,190

Note:- F/P: Fixed/Plug-in

■ Stock items

Tmax XT accessories



Motor operator with direct action - MOD

Frame	Description	Ordering code	L.P.(₹)
XT1- XT3	MOD XT1-XT3 24 V dc	1SDA066457R1	42,320
	MOD XT1-XT3 48...60 V dc	1SDA066458R1	
	MOD XT1-XT3 110...125 V ac/dc	1SDA066459R1	34,810
	MOD XT1-XT3 220...250 V ac/dc	1SDA066460R1 ■	
	MOD XT1-XT3 380...440 V ac	1SDA066461R1	
	MOD XT1-XT3 480...525 V ac	1SDA066462R1	42,320



Stored Energy Motor Operator - MOE, Stored energy motor operator with electronics - MOE-E

Frame	Description	MOE	L.P. (₹)	MOE-E	L.P. (₹)
XT2-XT4	24 V DC	1SDA066463R1	60,300	1SDA066469R1	72,360
	110...125V AC/DC	1SDA066465R1	49,690	1SDA066471R1	59,630
	220...250 V AC / DC	1SDA066466R1 ■		1SDA066472R1	
	380...440 V AC	1SDA066467R1	60,300	1SDA066473R1	72,360
XT5	24 V DC	1SDA104879R1	85,850	1SDA104899R1	1,03,020
	110...125V AC/DC	1SDA104883R1	70,950	1SDA104903R1	85,140
	220...250V AC/DC	1SDA104885R1		1SDA104905R1	
XT6	24 V DC	1SDA104889R1	Upon request		
	110...125V AC/DC	1SDA104893R1			
	220...250V AC/DC	1SDA104895R1			



Time delay device for under voltage release- UVD

Frame	Description	Ordering code	L.P. (₹)
XT1....XT6	UVD XT1...XT6 24...30 Vac/dc	1SDA051357R1	70,940
	UVD XT1...XT4 110...125V AC/DC	1SDA051360R1	69,770
	UVD XT1...XT4 220...250V AC/DC	1SDA051361R1	
	UVDXT5...XT6 24...30V AC/DC	1SDA101983R1	78,040
	UVD XT5...XT6 110...125V AC/DC	1SDA101981R1	76,750
UVD XT5...XT6 220...250 Vac/dc	1SDA101982R1		
XT7-XT7M	UVD 24/30 Vac/dc	1SDA038316R1	Upon request
	UVD 110/127 Vac/dc	1SDA038319R1	
	UVD 220...250 Vac/dc	1SDA038320R1	



Low insulating terminal covers - LTC

Frame	Description	3 Pole-2 pcs	L.P. (₹)	4 Pole-2 pcs	L.P. (₹)
XT1....XT4	LTC XT1	1SDA066655R1	3,600	1SDA066656R1	4,360
	LTC XT2	1SDA066657R1		1SDA066659R1	
	LTC XT3	1SDA066660R1	3,800	1SDA066661R1	4,860
	LTC XT4	1SDA066662R1		1SDA066663R1	5,550
XT5	LTC XT5	1SDA105018R1	5,160	1SDA105019R1	7,010
XT6	LTC XT6	1SDA105020R1	5,630	1SDA105021R1	7,730
XT7-XT7M	LTC XT7	1SDA107475R1	Upon request	1SDA107476R1	Upon request



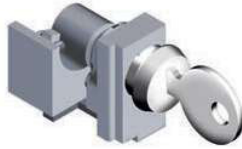
High insulating terminal covers - HTC

Frame	Description	3 Pole-2 pcs	L.P. (₹)	4 Pole-2 pcs	L.P. (₹)
XT1....XT4	HTC XT1	1SDA066664R1	4,920	1SDA066665R1	6,780
	HTC XT2	1SDA066666R1	5,570	1SDA066667R1	7,650
	HTC XT3	1SDA066668R1	6,020	1SDA066669R1	8,380
	HTC XT4	1SDA066670R1	6,710	1SDA066671R1	9,250
XT7-XT7M	HTC XT7	1SDA105029R1	Upon request	1SDA105030R1	Upon request

Tmax XT accessories

Key lock

Key Lock - KLC



Frame	Description	Ordering code	L.P. (₹)
	KLC XT1 RONIS Key Lock Diff.Key, Removable In Open Pos.	1SDA066593R1	
	KLC XT1 RONIS Key Lock Same Key Type A, Removable in Open Pos.	1SDA066594R1	
	KLC XT1 RONIS Key Lock Same Key Type B, Removable in Open Pos.	1SDA066595R1	
	KLC XT2-XT4 RONIS Key Lock Diff.Key, Removable In Open Pos.	1SDA066599R1	
XT1....XT4	KLC XT2-XT4 RONIS Key Lock Same Key Type A, Removable in Open Pos.	1SDA066600R1 ■	3,730
	KLC XT2-XT4 RONIS Key Lock Same Key Type B, Removable in Open Pos.	1SDA066601R1	
	KLC XT3 RONIS Key Lock Diff.Key, Removable In Open Pos.	1SDA066605R1	
	KLC XT3 RONIS Key Lock Same Key Type A, Removable in Open Pos.	1SDA066606R1	
	KLC XT3 RONIS Key Lock Same Key Type B, Removable in Open Pos.	1SDA066607R1	
XT5-XT6	KLC XT5-XT6 RONIS Key Lock Diff.Key, Removable In Open Pos.	1SDA105066R1	6,520
	KLC XT5-XT6 RONIS Key Lock Same Key Type A, Removable in Open Pos.	1SDA105062R1	
	KLC XT5-XT6 RONIS Key Lock Same Key Type B, Removable in Open Pos.	1SDA105063R1	
XT7	KLC XT7 RONIS Key Lock Diff.Key, Removable In Open Pos.	1SDA105075R1	Upon request
	KLC XT7 RONIS Key Lock Same Key Type A, Removable in Open Pos.	1SDA105071R1	
	KLC XT7 RONIS Key Lock Same Key Type B, Removable in Open Pos.	1SDA105072R1	

Key Lock for Rotary Handle & FLD - RHL



Frame	Description	Ordering code	L.P. (₹)
XT1....XT4	RHL XT1...XT4 KEY LOCK RONIS Diff. Keys	1SDA066617R1 ■	2,960
	RHL XT1...XT4 KEY LOCK RONIS TYPE A	1SDA066618R1 ■	
	RHL XT1...XT4 KEY LOCK RONIS TYPE B	1SDA066619R1	
XT5	RHL XT5 KEY LOCK RONIS Diff. Keys	1SDA105081R1	
	RHL XT5 KEY LOCK RONIS TYPE A	1SDA105082R1	
	RHL XT5 KEY LOCK RONIS TYPE B	1SDA105083R1	5,710
XT6 - XT7	RHL XT6-XT7 KEY LOCK RONIS Diff. Keys	1SDA105091R1	
	RHL XT6-XT7 KEY LOCK RONIS TYPE A	1SDA105086R1	
	RHL XT6-XT7 KEY LOCK RONIS TYPE B	1SDA105087R1	

Key lock for motor operated- MOL



Frame	Description	Ordering code	L.P. (₹)
XT1-XT3	MOL-D XT1-XT3 KEY LOCK RONIS DIFF. KEY	1SDA066623R1	
	MOL-S XT1-XT3 KEY LOCK RONIS TYPE A	1SDA066624R1	
	MOL-S XT1-XT3 KEY LOCK RONIS TYPE B	1SDA066625R1	6,300
XT2-XT4	MOL-D XT2-XT4 KEY LOCK RONIS DIFF. KEY	1SDA066629R1	
	MOL-S XT2-XT4 KEY LOCK RONIS TYPE A	1SDA066630R1	
	MOL-S XT2-XT4 KEY LOCK RONIS TYPE B	1SDA066631R1	
XT5-XT6	MOL-D XT5-XT6 KEY LOCK RONIS DIFF. KEY	1SDA105092R1	
	MOL-S XT5-XT6 KEY LOCK RONIS TYPE A	1SDA105093R1	11,050
	MOL-S XT5-XT6 KEY LOCK RONIS TYPE B	1SDA105095R1	

Key Lock or Fixed Part- KLF



Frame	Description	Ordering code	L.P. (₹)
XT2-XT4	KL-D Ronis key lock different keys	1SDA066298R1	5,880
	KL-S Ronis key lock Same key Type A	1SDA066300R1	
XT5-XT6	KL-D Ronis key lock different keys	1SDA105109R1	8,530
	KL-S Ronis key lock Same key Type A	1SDA105110R1	

Note : For other combinations of keylock, contact nearest sales office

Test and configuration unit



Frame	Description	Ordering code	L.P. (₹)
XT2 - XT7	Ekip TT Trip test unit	1SDA066988R1	12,600

■ Stock items

Tmax XT accessories



Pad Lock - PLL

Frame	Description	Ordering code	L.P. (₹)
XT1....XT4	PLL XT1-XT3 REMOV.PADL.DEVICE OPEN PLUG	1SDA066588R1	
	PLL XT1-XT3 PADLOCKS DEVICE OPEN	1SDA066589R1	
	PLL XT2-XT4 PADLOCKS DEVICE OPEN	1SDA066590R1	2,770
	PLL XT1-XT3 PADLOCKS DEVICE OP/CL	1SDA066591R1	
	PLL XT2-XT4 PADLOCKS DEVICE OP/CL	1SDA066592R1	
XT5-XT6	PLL XT5 REM.PADLOCKS DEVICE OPEN	1SDA105100R1	
	PLL XT5 PADLOCKS DEVICE OPEN	1SDA105099R1	
	PLL XT5 PADLOCKS DEVICE OP/CL	1SDA105098R1	7,210
	PLL XT6 REM.PADLOCKS DEVICE OPEN	1SDA105103R1	
	PLL XT6 PADLOCKS DEVICE OPEN	1SDA105102R1	
	PLL XT6 PADLOCKS DEVICE OP/CL	1SDA105101R1	
XT7	PLL XT7 PADLOCKS DEVICE OPEN	1SDA105104R1	Upon Request



Mechanical interlock between circuit breakers

Frame	Description	Ordering code	L.P. (₹)
XT1....XT4	MIR-HR XT1..XT4 MECH INTERLOCK HOR. 2 CB**	1SDA066637R1	23,560
	MIR-VR XT1..XT4 MECH INTERLOCK VER. 2 CB**	1SDA066638R1	
	MIR-P PLATE x XT1 F	1SDA066639R1	
	MIR-P PLATE x XT2 F	1SDA066641R1	8,250
	MIR-P PLATE x XT3 F	1SDA066643R1	
	MIR-P PLATE x XT4 F	1SDA066645R1	
XT5	MIR-H XT5 MECH,LOCK REAR HO. 2 C.BREAKER	1SDA105117R1	44,280
	MIR-V XT5 MECH,LOCK REAR VE. 2 C.BREAKER	1SDA105119R1	
	MIR-P x XT5 F	1SDA105122R1	11,470
XT6	MIR-H XT6 MECH,LOCK REAR HO. 2 C.BREAKER	1SDA105118R1	55,780
	MIR-V XT6 MECH,LOCK REAR HO. 2 C.BREAKER	1SDA105120R1	
	MIR-P x XT6 F	1SDA105126R1	12,620
XT7	Cable Kit for Interlock XT7		
	Cable Kit for Interlock XT7	Contact nearest sales office	Upon request
	Plate for Interlock XT7		
	Plate for Interlock XT7		

Note : ** Following must be ordered to make the rear interlock.

1. A MIR-HR or MIR-VR
2. A plate MIR-P for each circuit breaker to be interlocked
3. Order 1 No. of frame and 2 Nos. of plate per interlocking set for XT1 ... XT6
4. Order 2 Nos. of plate and 1 No. of Cable per interlocking set for XT7



Residual current devices

Frame	Description	3 Pole		4 Pole	
		Ordering code	L.P. (₹)	Ordering code	L.P. (₹)
XT1	RC Inst x XT1	1SDA067122R1	38,530	1SDA067124R1	44,580
	RC Sel x XT1	1SDA067123R1		1SDA067125R1	
	RC Sel 200 x XT1			1SDA067121R1	55,560
XT2	RC Sel x XT2			1SDA067126R1	81,480
	RC Inst x XT3	1SDA067127R1	95,470	1SDA067129R1	1,02,670
XT3	RC Sel x XT3	1SDA067128R1	1,06,060	1SDA067130R1	1,12,980
	RC B Type x XT3			1SDA067132R1	1,59,430
XT5	RC Sel x XT5			1SDA105131R1	Upon request



Automation transfer switch - ATS

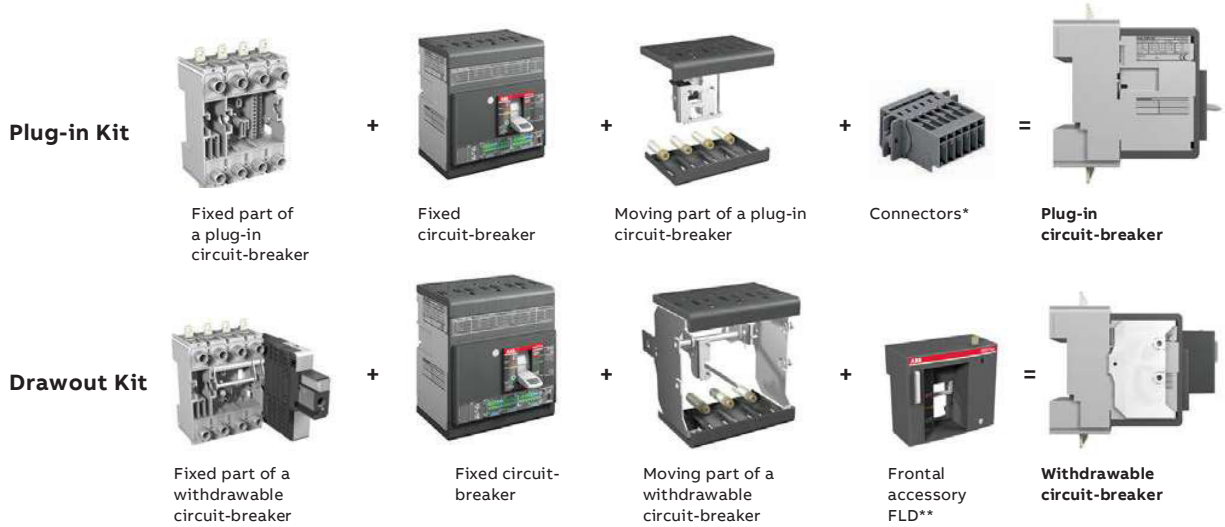
Automatic transfer switch

Frame	Description	Ordering code	L.P. (₹)
XT2-XT4/ XT5-	ATS021	1SDA065523R1	Upon request
XT7/ E1.2-E6.2	ATS022	1SDA065524R1	

Note : ATS will be used along with either two motorized ACB or MCCBs with required interlocking and changeover base plate as per the requirement.

■ Stock items

Tmax XT conversion kit



Plug-in and drawout conversion

Frame	Description	3 Pole	L.P. (₹)	4 Pole	L.P. (₹)
XT1	Plug-in moving part	1SDA066276R1	7,680	1SDA066277R1	10,630
	Plug-in fixed part	1SDA068183R1	14,080	1SDA068185R1	20,010
XT2	Plug-in moving part	1SDA066278R1	8,560	1SDA066279R1	11,610
	Plug-in fixed part	1SDA068187R1	15,390	1SDA068190R1	21,840
XT3	Plug-in moving part	1SDA066280R1	10,610	1SDA066281R1	13,050
	Plug-in fixed part	1SDA068192R1	15,850	1SDA068194R1	22,990
XT4	Plug-in moving part	1SDA066282R1	12,440	1SDA066283R1	16,930
	Plug-in fixed part	1SDA068196R1	17,130	1SDA068198R1	23,720
XT5 400	Plug-in moving part	1SDA104707R1	Upon Request	1SDA104708R1	Upon Request
	Plug-in fixed part	1SDA104668R1		1SDA104672R1	
XT5 630	Plug-in moving part	1SDA104709R1	Upon Request	1SDA104710R1	Upon Request
	Plug-in fixed part	1SDA104676R1		1SDA104679R1	
XT2	Drawout moving part	1SDA066284R1	14,140	1SDA066285R1	20,010
	Drawout fixed part	1SDA068200R1	31,560	1SDA068202R1	43,470
XT4	Drawout moving part	1SDA066286R1	16,110	1SDA066287R1	21,840
	Drawout fixed part	1SDA068204R1	33,120	1SDA068206R1	45,960
XT5 400	Drawout moving part	1SDA104711R1	Upon Request	1SDA104712R1	Upon Request
	Drawout fixed part	1SDA104682R1		1SDA104686R1	
XT5 630	Drawout moving part	1SDA104713R1	Upon Request	1SDA104714R1	Upon Request
	Drawout fixed part	1SDA104690R1		1SDA104693R1	
XT6	Drawout moving part	1SDA104715R1	Upon Request	1SDA104716R1	Upon Request
	Drawout fixed part	1SDA104696R1		1SDA104699R1	
XT7	Drawout moving part	1SDA104702R1	Upon Request	1SDA104704R1	Upon Request
	Drawout fixed part	1SDA104717R1		1SDA104718R1	

Note:

* For plugin MCCB with electrical accessories, connectors to be ordered

(1) For withdrawable MCCB with shunt opening and undervoltage release dedicated connectors are available

** FLD or rotary handle or motor operator is mandatory to select for a drawout MCCB

Connectors



Description	Ordering code	L.P. (₹)
Socket-plug panel connector with 3PINS (XT1...XT4)	1SDA066409R1	2,430
Socket-plug panel connector with 6PINS (XT1...XT4)	1SDA066410R1	4,660
Socket-plug panel connector with 9PINS (XT1...XT4)	1SDA066411R1	7,020
Socket-plug panel connector with 15PINS (XT1...XT4)	1SDA066412R1	11,540
Socket-plug connector of moving part 12PINS (XT2...XT4)	1SDA066413R1	12,440
Socket-plug connector of fixed part 12PINS (XT2...XT4)	1SDA066414R1	
Connector 4th pole SOR-PS-SOR (XT2...XT4)	1SDA066415R1 (1)	2,420
Connector 4th pole UVR (XT2...XT4)	1SDA066418R1 (1)	2,220
Connector 4th pole YO (XT5)	1SDA104968R1 (1)	2,480
Connector 4th pole YU (XT5)	1SDA104970R1 (1)	2,280

Note: For Plug-in MCCB Accessories, refer Tmax XT common accessories section

Tmax XT (Withdrawable) accessories



Rotary handle operating mechanism

Frame	RHD	L.P. (₹)	RHE	L.P. (₹)
XT2-XT4 W	1SDA066476R1	4,260	1SDA066480R1 ■	4,930
XT5 W STAND. DIRECT	1SDA104828R1	7,800	1SDA104844R1	12,380
XT6 W STAND. DIRECT	1SDA104834R1	13,500	1SDA104854R1	15,740
XT7 F/W	1SDA104838R1	17,480	1SDA104863R1	19,340

Service releases

Shunt opening release - SOR



Frame	Description	Code	L.P. (₹)
XT1... XT4	24-30 V AC/DC W	1SDA066329R1	10,700
	110-127V AC / 110-125V DC Vac/dc W	1SDA066331R1	
	220...240 V ac-220...250 V DC W	1SDA066332R1	
	380-440 V AC W	1SDA066333R1	
XT5	110..240 Vac - 110..250 Vdc W	1SDA104930R1	15,020
XT6	110..240 Vac - 110..250 Vdc W	1SDA104938R1	16,530
XT7-XT7M	220...240V AC/DC	1SDA073674R1	Upon request

Note: W:Withdrawable

Under voltage release - UVR



Frame	Description	Code	L.P. (₹)
XT1....XT4	24-30 VAC/DC W	1SDA066403R1	12,860
	110...127V AC / 110...125V DC Vac/dc W	1SDA066405R1	
	220-240Vac-220-250V DC W	1SDA066406R1	
	380-440 V AC W	1SDA066407R1	
XT5	110..127V AC - 110..125V DC Vac/dc W	1SDA104950R1	19,450
	220..240 Vac - 220..250 Vdc W	1SDA104951R1	
XT6	110..127V AC - 110..125V DC Vac/dc W	1SDA104964R1	19,450
	220..240 Vac - 220..250 Vdc W	1SDA104965R1	
XT7-XT7M	220...240V AC/DC	1SDA073700R1	Upon Request

Note: W:Withdrawable

Accessories for electronic trip units

Frame	Description	Ordering code	L.P. (₹)
XT2-XT4	EKIP COM RTU for XT2-XT4 Ekip C Dip W	1SDA122800R1	Upon request
	KIT x CONNECTION Vaux 24Vdc XT2-XT4 W	1SDA066981R1	6,940

Note:- W:Withdrawable