

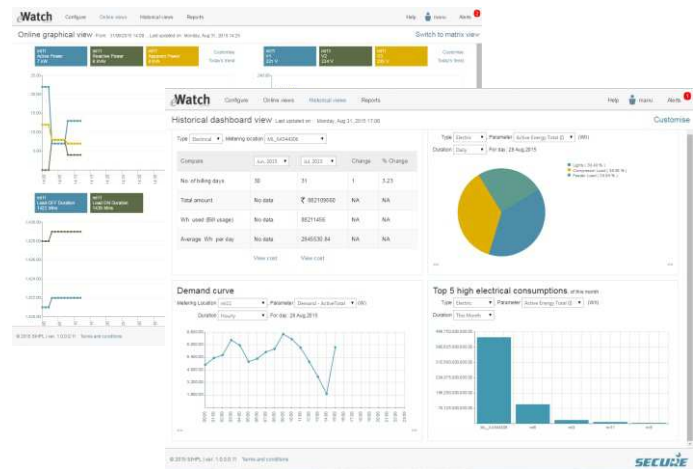
eWatch Online is a web-based service for monitoring energy consumption, cost, operational efficiency and system status.

It provides all the information an organisation needs to manage its power system and reduce its energy costs. It enables the performance of the energy system to be optimised, through features including consumption monitoring, analysis of emissions and alerts issued using mobile technology.

eWatch Online enables the exchange of data from different utilities, such as electricity, gas, heat and water.

Live data from energy measuring points can be viewed in real time from any location with internet access.

The service model is flexible, so only the required number of meters and gateways need to be purchased, according to the number of monitoring points. Various service level options are available from the website, according to need, application and budget. Data SIM or broadband connectivity is required for data communication at site.



### Applications

- Industry, micro, small and medium enterprises (MSMEs)
- Factories, offices, commercial buildings, hotels and institutions
- Industries and buildings purchasing power under Open Access
- Distributed generators and discrete loads
- Sub-tenant Billing
- Multi-location retail chains

### Benefits

- Helps create cost awareness for utility consumption (electricity, gas, heat and water)
- Isolate waste from efficiency
- Set realistic targets for energy consumption
- Verify the effectiveness of operational charges
- Learn where and when energy is consumed
- Carbon emissions through meaningful real-time displays
- Monitor the performance of geographically distributed assets as required, even while on the move
- Enables and encourages active participation by managers and staff
- Provides accurate information from any location with internet access
- Helps energy efficiency certification targets to be met
- Affordable licensing arrangements spread the cost and provide lifetime savings

### Features

- Real-time personalized dashboards
- Shift-wise energy monitoring and analysis
- Consumption reports for energy groups
- User-configurable spreadsheet-based reports
- Production data can be entered
- Historical graphs and trends
- 'Virtual meters' for in-depth analysis of a group
- Provision to integrate gas, heat and water
- Tariff module for cost calculations
- Target demand and Open Access schedule monitoring
- Alerts for deviations from targeted consumption
- Downloadable reports via e-mail or spreadsheet
- Choice of package to suit individual need

### Skyline gateway

- 'Daisy chain' connection for multiple meters
- Gateway collects data from meters
- Direct Ethernet communications also supported
- Gateway sends data to eWatch online central data centre (CDC) over GPRS/Broadband
- Integral 256 MB memory

### Mobile Application

- It has a key feature of providing all the monitoring over mobile app, which is available for Android and iOS smartphones.
- Users can download the app and run it with the same login created during service purchase.
- User gets instant alerts/event notification over app.
- User can configure new gateways and can view the data anywhere at anytime.

## Measure

- Electricity supplied by the grid
- Electricity supplied by diesel generators (DG)
- Electricity generated from renewable sources
- Electricity consumed: total, per load, or feeder-specific
- Power factor and demand

## Monitor

- Energy consumed against production
- Actual demand against contract demand
- Target demand against Open Access schedule
- Reactive energy against load
- CO2 emissions against energy consumption
- Consumption of different types of load or energy
- Locations with high consumption
- Building energy consumption with respect to temperature and humidity
- Consumption by department or location, using virtual groups
- Electricity, gas, heat and water consumption

## Analyse

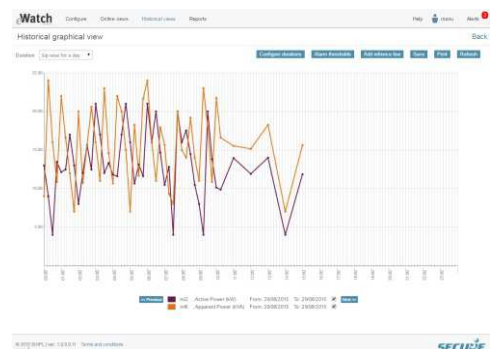
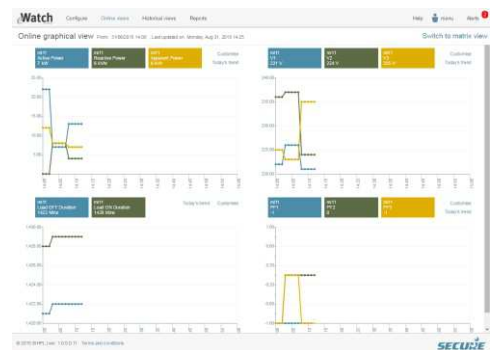
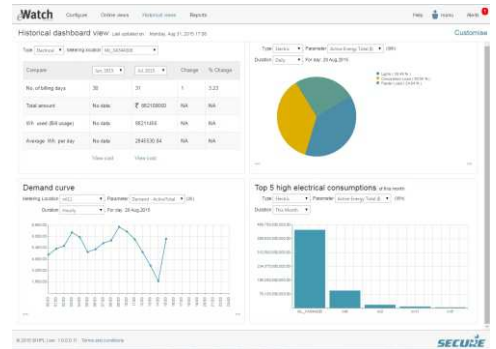
- Key performance indices (KPIs)

## Industry

- Production per unit energy consumption
- Compare consumption trends of different locations

## Building

- Energy consumption per unit floor area
- Energy consumption per person, per month
- Compare consumption trends of different locations



| Features   | Packages    |  |  |  |
|--|-------------|--|--|--|
|  | Trial/free* | Silver (Entry Level)                               | Gold (Essential Level)                             | Platinum (Advance Level)                           |
| Duration   | 31 days     | Min 1 year to max 5 years (in multiples of 1 year) | Min 1 year to max 5 years (in multiples of 1 year) | Min 1 year to max 5 years (in multiples of 1 year) |
| Meter reading frequency (minutes)  | 15          | 15, 30, 60   | 15, 30, 60   | 1, 3, 5, 15, 30, 60                                |
| Basic feature (dashboard, views, cost analysis, alarms, reports on e-mail) | Yes         | Yes  | Yes  | Yes  |
| Multifuel support  | Yes         | No   | Yes  | Yes  |
| Carbon monitoring  | Yes         | No   | Yes  | Yes  |
| SEC support  | Yes         | No   | Yes  | Yes  |
| Mobile app / alert   | Yes         | No   | Yes  | Yes  |
| On demand reports  | Yes         | No   | Yes  | Yes  |
| Open Access/scheduled demand analysis                                      | Yes         | No   | No   | Yes  |
| Support of meters/load points  | 1           | 1 to 1000  | 1 to 1000  | 1 to 1000  |
| Number of simultaneous users   | 1           | <=5  | <=20   | <=50   |

\*Meters need to be purchased for trial or free services.

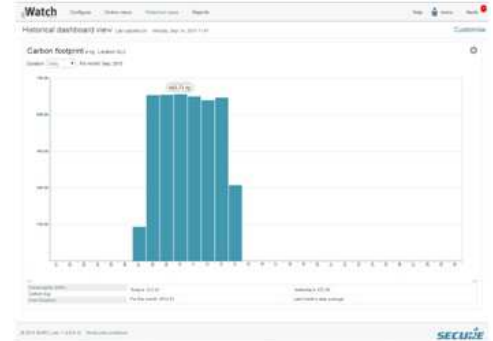
## Package feature details:

### Multi-fuel support

Provides comprehensive solution to integrate with additional fuel meters, including gas, water, heat and electricity. eWatch Online can communicate with multi-fuel meters through pulse-to-Modbus converters.

### Carbon Monitoring

The Carbon Factor for fuels such as electricity, gas, water, heat and DG can be defined, allowing carbon emissions to be evaluated over selectable intervals, such as daily or monthly. Comparison data and reports can also be generated.

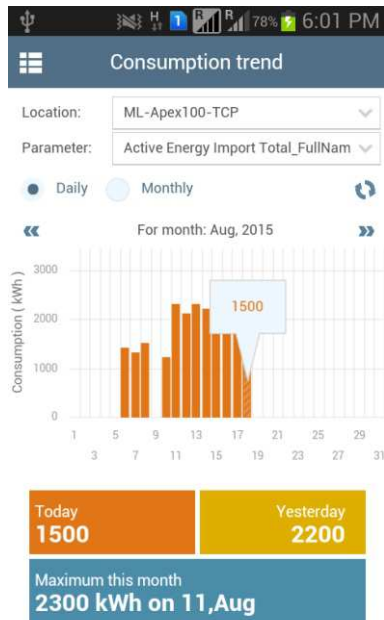


### Specific Energy Consumption (SEC)

The entity's production plan can be entered into the system, so that production output can be monitored against energy consumption. Reporting facilities are also provided for periodic data analysis.

### Mobile App

Facilitates all the monitoring and alerts feature over mobile app.



| Alert ID | Time                            | Skyline no. | Metering Location | Meter Srno.     | Parameter      | Upper limit | Lower limit | Value     |
|----------|---------------------------------|-------------|-------------------|-----------------|----------------|-------------|-------------|-----------|
| AL1      | Sat Aug 08 2015 11:03:07 am IST | RND01237    | ML_RND00825       | RND00825        | V1             | 100 V       | 50 V        | 167.25 V  |
| AL1      | Sat Aug 08 2015 11:03:05 am IST | RND01237    | ML_TTM00057       | TTM00057A       | V1             | 100 V       | 50 V        | 6432.41 V |
| AL1      | Sat Aug 08 2015 11:03:04 am IST | RND01237    | ML_RND00887       | RND008870000000 | V1             | 100 V       | 50 V        | 5942.31 V |
| AL1      | Wed Aug 05 2015 6:43:04 pm IST  | RND01237    | ML_RND00825       | RND00825        | Apparent Power | -           | -           | -         |

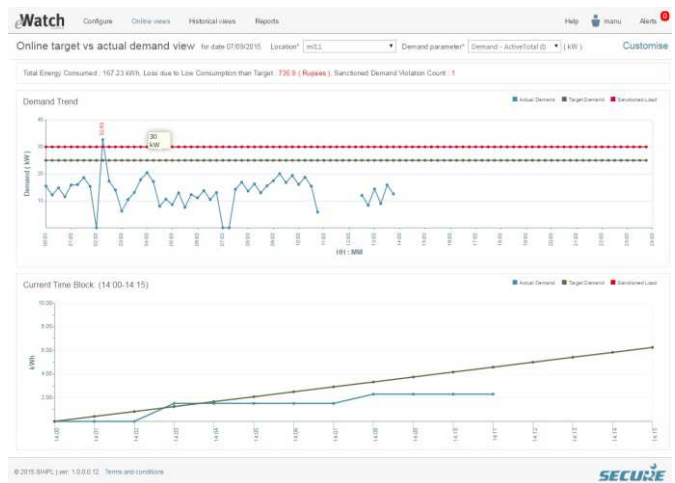
| Parameters                          | Values       |
|-------------------------------------|--------------|
| V1                                  | 6413.68 V    |
| V2                                  | 0 V          |
| V3                                  | 13.53 V      |
| Vavg                                | 48.69 V      |
| V12                                 | 6413.68 V    |
| V23                                 | 13.53 V      |
| V31                                 | 6424.78 V    |
| L1                                  | 14.31 A      |
| L2                                  | 0 A          |
| L3                                  | 4.93 A       |
| Active Power                        | 91.69 kW     |
| Reactive Power                      | -3.25 KVAR   |
| Apparent Power                      | 91.75 kVA    |
| Power1111- Active Import Total_Full | -0.999       |
| Active Energy Import                | 54095000 kWh |

## On demand reports

- Consumption: daily, monthly, shift-wise daily and monthly, savings per interval
- Maximum demand: daily and interval-wise saving
- Parameter report: daily
- Min/max: daily
- Bill report: monthly
- Meter replacement: by day
- Non-electric consumption: daily, monthly and savings per interval
- Specific energy consumption: daily, monthly and daily per shift
- DG consumption on/off: daily, monthly and savings per interval
- Actual demand versus target: daily
- Carbon footprint: monthly

## Open Access

The Open Access schedule received from the Indian Energy Exchange can be entered, enabling demand progress to be tracked minute-by-minute. Energy pattern reports enable the effectiveness of purchased power to be monitored and analysed.



## Skyline Gateway Purchase

| Polling Frequency                | Number of meters per gateway |
|----------------------------------|------------------------------|
| 1 minute/ 3 minute/ 5 minute     | Maximum 10                   |
| 15 minute / 30 minute/ 60 minute | Maximum 25                   |

Contact: Jasdeep Singh Dawar  
 Indersons (Secure Authorised Channel Partner)  
 011 4724 3000