

**ROMA**  
Classic



# Switch To An Impression which **Lasts Forever**

Because Classics Never Go Out of Style



Our Pricelist is now  
**Available Online**  
Scan & download



21011 21022 21033 30840 21044 21055



21510 39464 21521



21554 30175



21066 21088 21077



21532 21769 21543



22014 21984 20405



21102 21124 30828



22546 21496 22036 / 20507 22037

16A,20A,25A Switch not suggested for geyser load. Instead MCB/Motor Stater must be used.

Item	Description	HSN	Unit Sale Price Rs per number	Standard Packing Quantity (Number)	Maximum Retail Price (Inclusive of all taxes) Rs.
<b>SWITCHES (ISI)</b>					
21011	10AX 1 Way Switch 100W SBL Load	85361010	77	20	1540
21022	10AX 2 Way Switch 100W SBL Load	85361010	186	20	3720
21033	10AX 1 Way Switch With Neon 100W SBL Load	85361010	191	20	3820
30840	10AX 1 Way Switch With Fan Mark 100W SBL Load	85361010	191	20	3820
21044	10A Bell Push	85361010	193	20	3860
21055	10A Bell Push With Neon	85361010	206	20	4120
<b>DURA SWITCHES (ISI)</b>					
21510	10AX 1 Way Switch 100W SBL Load	85361010	196	10	1960
34964	10AX 1 Way Switch With Neon 100W SBL Load	85361010	221	10	2210
21521	10AX 2 Way Switch 100W SBL Load	85361010	221	10	2210
21554	10A Bell Push	85361010	221	10	2210
30715	10A Bell Push With Neon	85361010	242	10	2420
<b>SWITCHES (ISI)</b>					
21066	20A 1 Way Switch 250W SBL Load	85361020	206	20	4120
21088	20A 2 Way Switch 250W SBL Load	85361020	235	20	4700
21077	20A 1 Way Switch With Neon 250W SBL Load	85361020	245	20	4900
<b>DURA SWITCHES (ISI)</b>					
21532	20A 1 Way Switch 250W SBL Load	85361020	270	10	2700
21769	20A 1 Way Switch With Neon 250W SBL Load	85361020	289	10	2890
21543	20A 2 Way Switch 250W SBL Load	85361020	283	10	2830
<b>POWER &amp; MOTOR STARTER SWITCHES</b>					
22014	25A S.P. 1 Way Switch With Neon, ISI	85361020	314	20	6280
21984	32A D.P. 1 Way Switch With Neon, ISI	85361020	406	10	4060
20405	25A Motor Starter Switch	85369010	587	10	5870
<b>SOCKET (ISI)</b>					
21102	6A 3 Pin Socket With, ISI	85366910	179	10	1790
21124	16A 3 Pin Socket, 240V, ISI	85366910	292	10	2920
30828	6A/16A Twin Socket, ISI	85366910	319	10	3190
<b>FAN REGULATORS</b>					
22546	Fan Step Regulator Tiny EME 100W	84149030	441	20	8820
21496**	Fan Step Regulator Dura EME 100W	84149030	616	10	6160
22036**	High Speed Fan Regulator Dura EME 100W	84149030	622	10	6220
20507	100W Fan Regulator, 2 Module, ISI	84149030	677	10	6770
22037	Fan Regulator (7 Step), 2 Module,100W	84149030	616	10	6160

\*\*Compatible with selected BLDC Fan models only



Item	Description	HSN	Unit Sale Price Rs per number	Standard Packing Quantity (Number)	Maximum Retail Price (Inclusive of all taxes) Rs.
<b>DIMMERS</b>					
20799	Dimmer Tiny 450 W (For Incandescent Lamp)	85365020	545	20	10900
21190	Dimmer Dura 650 W (For Incandescent Lamp)	85365020	737	10	7370
30351	Dimmer For Halogen 1000 W	85365020	1058	10	10580
30046	150W,LED Dimmer ,2 Module	85365090	1848	10	18480
<b>SUPPORT MODULES</b>					
30045	Cord Outlet With Grip	85366910	169	20	3380
21157	T.V. Socket Outlet Single	85365090	204	20	4080
20358	Bell Indicator 240V,50Hz	85318000	386	20	7720
20471	Audio Video Socket	85366910	630	10	6300
20857	RJ 11 Tel. Jack Single With Shutter	85366910	204	20	4080
34942	RJ 11 Tel. Jack Double W/O Shutter	85366910	290	20	5800
30555	RJ 45 Comp.Jack With Shutter	85366910	319	20	6380
35763	RJ 45 Comp.Socket Cat 6	85366910	842	20	16840
35752	RJ 45 Comp.Socket Cat 5e	85366910	736	20	14720
35774	RJ 45 Receptor	85366910	208	20	4160
21146	Fuse Unit For 16 Or 10A	85361030	221	20	4420
21180R	Neon Indicator Red	85311090	143	20	2860
21598	Blank Plate Single	85389000	45	50	2250
30420	Blank Plate Dura	85389000	80	20	1600
21204	Buzzer Dura 240V,50Hz	85318000	250	10	2500
21205	Bluetooth Speaker	85182900	3083	6	18498
21996	High-Definition Multimedia Interface, 1 Module	85365090	1421	20	28420
20462	USB-A Charger, Single Port(2.1A, 5V DC), 1 Module (CRS Certified)	85044090	1480	20	29600
21206	18W, USB Power Delivery Charger(USB-C), 1M	85182900	1735	20	34700
21207	18W, USB Type-A Fast Charger, 1M	85182900	1652	20	33040
<b>HOTEL &amp; HOSPITAL RANGE</b>					
21770	32A D.P. Main Switch With Key Ring Tag	85365090	941	5	4705
20868	Keyring Tag Only Polycarbonate	85365090	186	10	1860
20482	20A Keycard Unit with 30Seconds Delay	85365090	2793	1	2793
34997	DND & MMR With Bell Push & Indicator	85365090	1062	5	5310
22069	Shaver Soc.110/240,With Transformer 4 M	85365090	3027	1	3027
20824	PIR Sensor (Wall Mounting) 2 Module,230V 50 Hz	90318000	4920	1	4920
22614	Foot Light LED Based (Cool Day Light),3 Module 240V	94054090	722	1	722
22615	Foot Light LED Based (Warm Light),3 Module 240V	94054090	722	1	722
22616	Emergency LED Light,3 Module 240V	94056010	1169	1	1169



21011MB 21022MB 21033MB 30840MB 21044MB 21055MB

21510MB 34964MB 21521MB

21554MB 30715MB

21066MB 21088MB 21077MB

21532MB 21769MB 21543MB

22014MB 21984MB 20405MB

21102MB 21124MB 30828MB

22546MB 21496MB 22036MB / 20507MB 22037MB

Item	Description	HSN	Unit Sale Price Rs per number	Standard Packing Quantity (Number)	Maximum Retail Price (Inclusive of all taxes) Rs.
<b>SWITCHES (ISI)</b>					
21011MB	10AX 1 Way Switch 100W SBL Load	85361010	88	20	1760
21022MB	10AX 2 Way Switch 100W SBL Load	85361010	206	20	4120
21033MB	10AX 1 Way Switch With Neon 100W SBL Load	85361010	208	20	4160
30840MB	10AX 1 Way Switch With Fan Mark 100W SBL Load	85361010	195	20	3900
21044MB	10A Bell Push	85361010	209	20	4180
21055MB	10A Bell Push With Neon	85361010	230	20	4600
<b>DURA SWITCHES (ISI)</b>					
21510MB	10AX 1 Way Switch 100W SBL Load	85361010	200	10	2000
34964MB	10AX 1 Way Switch With Neon 100W SBL Load	85361010	227	10	2270
21521MB	10AX 2 Way Switch 100W SBL Load	85361010	240	10	2400
21554MB	10A Bell Push	85361010	242	10	2420
30715MB	10A Bell Push With Neon	85361010	264	10	2640
<b>SWITCHES (ISI)</b>					
21066MB	20A 1 Way Switch 250W SBL Load	85361020	230	20	4600
21088MB	20A 2 Way Switch 250W SBL Load	85361020	256	20	5120
21077MB	20A 1 Way Switch With Neon 250W SBL Load	85361020	270	20	5400
<b>DURA SWITCHES (ISI)</b>					
21532MB	20A 1 Way Switch 250W SBL Load	85361020	273	10	2730
21769MB	20A 1 Way Switch With Neon 250W SBL Load	85361020	321	10	3210
21543MB	20A 2 Way Switch 250W SBL Load	85361020	305	10	3050
<b>POWER &amp; MOTOR STARTER SWITCHES</b>					
22014MB	25A S.P. 1 Way Switch With Neon, ISI	85361020	340	20	6800
21984MB	32A D.P. 1 Way Switch With Neon, ISI	85361020	454	10	4540
20405MB	25A Motor Starter Switch	85369010	633	10	6330
<b>SOCKET (ISI)</b>					
21102MB	6A 3 Pin Socket With, ISI	85366910	197	10	1970
21124MB	16A 3 Pin Socket, 240V, ISI	85366910	319	10	3190
30828MB	6A/16A Twin Socket, ISI	85366910	350	10	3500
<b>FAN REGULATORS</b>					
22546MB	Fan Step Regulator Tiny EME 100W	84149030	488	20	9760
21496MB**	Fan Step Regulator Dura EME 100W	84149030	680	10	6800
22036MB**	High Speed Fan Regulator Dura EME 100W	84149030	616	20	12320
20507MB	100W Fan Regulator, 2 Module, ISI	84149030	700	10	7000
22037MB	Fan Regulator (7 Step), 2 Module, 100W	84149030	680	10	6800

\*\*Compatible with selected BLDC Fan models only

16A,20A,25A Switch not suggested for geyser load. Instead MCB/Motor Stater must be used.



Item	Description	HSN	Unit Sale Price Rs per number	Standard Packing Quantity (Number)	Maximum Retail Price (Inclusive of all taxes) Rs.
<b>DIMMERS</b>					
20799MB	Dimmer Tiny 450 W (For Incandescent Lamp)	85365020	601	20	12020
21190MB	Dimmer Dura 650 W (For Incandescent Lamp)	85365020	812	10	8120
30351MB	Dimmer For Halogen 1000 W	85365020	1088	10	10880
30046MB	150W,LED Dimmer ,2 Module	85365090	1854	10	18540
<b>SUPPORT MODULES</b>					
30045MB	Cord Outlet With Grip	85366910	173	20	3460
21157MB	T.V. Socket Outlet Single	85365090	220	20	4400
20358MB	Bell Indicator 240V,50Hz	85318000	422	20	8440
20471MB	Audio Video Socket	85366910	642	10	6420
20857MB	RJ 11 Tel. Jack Single With Shutter	85366910	218	20	4360
34942MB	RJ 11 Tel. Jack Double W/O Shutter	85366910	316	20	6320
35763MB	RJ 45 Comp.Socket Cat 6	85366910	917	20	18340
35752MB	RJ 45 Comp.Socket Cat 5e	85366910	747	20	14940
35774MB	RJ 45 Receptor	85366910	223	20	4460
21146MB	Fuse Unit For 16 Or 10A	85361030	244	20	4880
21180RMB	Neon Indicator Red	85311090	158	20	3160
21598MB	Blank Plate Single	85389000	50	50	2500
30420MB	Blank Plate Dura	85389000	83	20	1660
21204MB	Buzzer Dura 240V,50Hz	85318000	281	10	2810
21205MB	Bluetooth Speaker	85182900	3339	6	20034
21996MB	High-Definition Multimedia Interface, 1 Module	85365090	1551	20	31020
20462MB	USB-A Charger, Single Port(2.1A, 5V DC), 1 Module (CRS Certified)	85044090	1594	20	31880
21206MB	18W, USB Power Delivery Charger(USB-C), 1M	85182900	2004	20	40080
21207MB	18W, USB Type-A Fast Charger, 1M	85182900	1907	20	38140
<b>HOTEL &amp; HOSPITAL RANGE</b>					
21770MB	32A D.P. Main Switch With Key Ring Tag	85365090	1024	5	5120
20868MB	Keyring Tag Only Polycarbonate	85365090	202	10	2020
20482MB	20A Keycard Unit with 30Seconds Delay	85365090	3037	1	3037
34997MB	DND & MMR With Bell Push & Indicator	85365090	1141	5	5705
22069MB	Shaver Soc.110/240,With Transformer 4 M	85365090	3080	1	3080
20824MB	PIR Sensor (Wall Mounting) 2 Module,230V 50 Hz	90318000	5089	1	5089
22614MB	Foot Light LED Based (Cool Day Light),3 Module 240V	94054090	789	1	789
22615MB	Foot Light LED Based (Warm Light),3 Module 240V	94054090	789	1	789
22616MB	Emergency LED Light,3 Module 240V	94056010	1175	1	1175

ROMA Classic



Roma Classic Mini MCB SP



Roma Classic Mini MCB DP



Roma Classic Mini MCB SP



Roma Classic Mini MCB DP



98488 / 98489



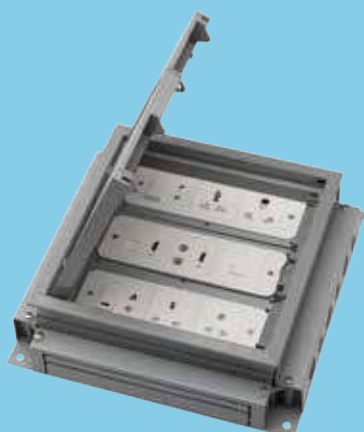
98491 / 98492



98496 / 98497



98498 / 98499



35751

Item	Description	HSN	Unit Sale Price Rs per number	Standard Packing Quantity (Number)	Maximum Retail Price (Inclusive of all taxes) Rs.
<b>ROMA CLASSIC MINI MODULAR MCB 'C' TYPE (WHITE)</b>					
98069	UNO MINI Modular 6A SP 'C' MCB	85362030	365	12	4380
98070	UNO MINI Modular 10A SP 'C' MCB	85362030	365	12	4380
98071	UNO MINI Modular 16A SP 'C' MCB	85362030	365	12	4380
98072	UNO MINI Modular 20A SP 'C' MCB	85362030	365	12	4380
98073	UNO MINI Modular 25A SP 'C' MCB	85362030	365	12	4380
98074	UNO MINI Modular 32A SP 'C' MCB	85362030	365	12	4380
98075	UNO MINI Modular 6A DP 'C' MCB	85362030	790	6	4740
98076	UNO MINI Modular 10A DP 'C' MCB	85362030	790	6	4740
98077	UNO MINI Modular 16A DP 'C' MCB	85362030	790	6	4740
98078	UNO MINI Modular 20A DP 'C' MCB	85362030	790	6	4740
98079	UNO MINI Modular 25A DP 'C' MCB	85362030	790	6	4740
98080	UNO MINI Modular 32A DP 'C' MCB	85362030	790	6	4740
<b>ROMA CLASSIC MINI MODULAR MCB 'C' TYPE (MATT BLACK)</b>					
98069MB	UNO MINI Modular 6A SP 'C' MCB	85362030	395	12	4740
98070MB	UNO MINI Modular 10A SP 'C' MCB	85362030	395	12	4740
98071MB	UNO MINI Modular 16A SP 'C' MCB	85362030	395	12	4740
98072MB	UNO MINI Modular 20A SP 'C' MCB	85362030	395	12	4740
98073MB	UNO MINI Modular 25A SP 'C' MCB	85362030	395	12	4740
98074MB	UNO MINI Modular 32A SP 'C' MCB	85362030	395	12	4740
98075MB	UNO MINI Modular 6A DP 'C' MCB	85362030	860	6	5160
98076MB	UNO MINI Modular 10A DP 'C' MCB	85362030	860	6	5160
98077MB	UNO MINI Modular 16A DP 'C' MCB	85362030	860	6	5160
98078MB	UNO MINI Modular 20A DP 'C' MCB	85362030	860	6	5160
98079MB	UNO MINI Modular 25A DP 'C' MCB	85362030	860	6	5160
98080MB	UNO MINI Modular 32A DP 'C' MCB	85362030	860	6	5160
<b>MODULAR AC BOX WITH MINI MCB</b>					
98488	"Modular AC Box With 20A SP MCB, Plastic Enclosure & Unbreakable Heavy Duty With ISI Plug Top"	85371000	1010	30	30300
98489	"Modular Surface AC Box With 20A SP MCB, Without Enclosure & Unbreakable Heavy Duty with ISI Plug Top"	85371000	865	30	25950
98491	"Modular AC Box With 20A SP MCB, Metal Enclosure & Unbreakable Heavy Duty With ISI Plug Top"	85371000	1080	20	21600
98492	"Modular Ac Box With 20A DP MCB, Metal Enclosure & Unbreakable Heavy Duty With ISI Plug Top"	85371000	1330	20	26600
98496	3M 25A SP MINI MCB IN PLASTIC ENCLOSURE/TOP	85371000	1010	16	16160
98497	3M 25A SP MINI MCB W/O PLASTIC ENCLOSURE	85371000	865	16	13840
98498	4M 25A SP MINI MCB IN PLASTIC ENCLOSURE/TOP	85371000	1075	14	15050
98499	4M 25A SP MINI MCB W/O PLASTIC ENCLOSURE	85371000	925	14	12950
<b>FLOOR JUNCTION BOX</b>					
35751	18 Module Floor Junction Box	85381090	9603	1	9603



- Precision Diamond Cut for Stylish Design
- High Density Toughened Glass 3 Times More Stronger than Non - Tempered Glass
- UPP Technology ensures Rich Colour effect



Pure White



Aqua Blue



Space Black

## VETRO GLASS PLATES

(HSN Code - 85381090)

COLOUR	MODULE	1 Module	2 Module	3 Module	4 Module	6 Module	8 Module Horizontal	8 Module Square	12 Module	16 Module	18 Module
Pure White	CODE	30216GPW	30227GPW	30238GPW	30249GPW	30250GPW	30384GPW	30260GPW	30271GPW	-	30282GPW
Aqua Blue	CODE	30216GAB	30227GAB	30238GAB	30249GAB	30250GAB	30384GAB	30260GAB	30271GAB	-	30282GAB
Space Black	CODE	30216GSB	30227GSB	30238GSB	30249GSB	30250GSB	30384GSB	30260GSB	30271GSB	-	30282GSB
<b>Unit Sale Price Rs per number</b>		<b>832</b>	<b>832</b>	<b>1136</b>	<b>1505</b>	<b>2038</b>	<b>2330</b>	<b>2330</b>	<b>2899</b>		<b>3765</b>
Maximum Retail Price (Inclusive of all taxes) Rs.		4160	4160	5680	7525	10190	11650	11650	14495	-	18825
Standard Packing Quantity (Number)		5	5	5	5	5	5	5	5	-	5



## SURFACE BOX WITH PLATE

(HSN Code - 85381090)

COLOUR	MODULE	1 Module	2 Module	3 Module	4 Module	6 Module	8 Module Horizontal	8 Module Square	12 Module	16 Module	18 Module
White	CODE	35191	35192	35193	35194	35195	35196	35197	35198	35199	35200
<b>Unit Sale Price Rs per number</b>		<b>145</b>	<b>145</b>	<b>178</b>	<b>221</b>	<b>295</b>	<b>384</b>	<b>384</b>	<b>470</b>	<b>542</b>	<b>596</b>
Maximum Retail Price (Inclusive of all taxes) Rs.		1450	1450	1780	2210	2950	1920	1920	2350	2710	2980
Standard Packing Quantity (Number)		10	10	10	10	10	5	5	5	5	5



Solid White



Solid Black

**TRESA SOLID PLATES**

(HSN Code - 85381090)

COLOUR	MODULE	1 Module	2 Module	3 Module	4 Module	6 Module	8 Module Horizontal	8 Module Square	12 Module	16 Module	18 Module
White	CODE	30216WH	30227WH	30238WH	30249WH	30250WH	30384WH	30260WH	30271WH	34680WH	30282WH
<b>Unit Sale Price Rs per number</b>		<b>149</b>	<b>149</b>	<b>191</b>	<b>223</b>	<b>307</b>	<b>392</b>	<b>392</b>	<b>485</b>	<b>545</b>	<b>570</b>
Maximum Retail Price (Inclusive of all taxes) Rs.		2980	2980	3820	4460	3070	3920	2352	2910	3270	3420
Matt Black	CODE	30216MB	30227MB	30238MB	30249MB	30250MB	30384MB	30260MB	30271MB	34680MB	30282MB
<b>Unit Sale Price Rs per number</b>		<b>165</b>	<b>165</b>	<b>211</b>	<b>246</b>	<b>334</b>	<b>429</b>	<b>429</b>	<b>527</b>	<b>594</b>	<b>614</b>
Maximum Retail Price (Inclusive of all taxes) Rs.		3300	3300	4220	4920	3340	4290	2574	3162	3564	3684
Standard Packing Quantity (Number)		20	20	20	20	10	10	6	6	6	6



White



Black

**LIRA PLATES WITH WHITE FRAME**

(HSN Code - 85381090)

COLOUR	MODULE	1 Module	2 Module	3 Module	4 Module	6 Module	8 Module Horizontal	8 Module Square	9 Module Horizontal	12 Module	16 Module	18 Module
Lira White	CODE	35286WH	35297WH	35300WH	35311WH	35322WH	35344WH	35333WH	35388WH	35355WH	35366WH	35377WH
<b>Unit Sale Price Rs per number</b>		<b>149</b>	<b>149</b>	<b>173</b>	<b>212</b>	<b>306</b>	<b>369</b>	<b>369</b>	<b>431</b>	<b>485</b>	<b>550</b>	<b>604</b>
Maximum Retail Price (Inclusive of all taxes) Rs.		2980	2980	3460	4240	3060	3690	2214	4310	2910	3300	3624
*Lira Black	CODE	35286MB	35297MB	35300MB	35311MB	35322MB	35344MB	35333MB	35388MB	35355MB	35366MB	35377MB
<b>Unit Sale Price Rs per number</b>		<b>144</b>	<b>155</b>	<b>182</b>	<b>223</b>	<b>322</b>	<b>387</b>	<b>387</b>	<b>454</b>	<b>513</b>	<b>580</b>	<b>635</b>
Maximum Retail Price (Inclusive of all taxes) Rs.		2880	3100	3640	4460	3220	3870	2322	4540	3078	3480	3810
Standard Packing Quantity (Number)		20	20	20	20	10	10	6	10	6	6	6

\*Available through pre order


**DEKO PLATES (SINGLE MOUNTING PLATES)**

(HSN Code - 85381090)

COLOUR	MODULE	1 Module	2 Module	3 Module	4 Module	6 Module	8 Module Horizontal	8 Module Square	9 Module Horizontal	12 Module	16 Module	18 Module
Deko White	CODE	21317WH	21328WH	21372WH	21339WH	21340WH	30431WH	21350WH	-	21361WH	20325WH	21383WH
<b>Unit Sale Price Rs per number</b>		<b>111</b>	<b>111</b>	<b>128</b>	<b>149</b>	<b>221</b>	<b>278</b>	<b>278</b>	<b>-</b>	<b>355</b>	<b>384</b>	<b>430</b>
Maximum Retail Price (Inclusive of all taxes) Rs.		2220	2220	2560	2980	2210	2780	1668	-	2130	2304	2580
Standard Packing Quantity (Number)		20	20	20	20	10	10	6	-	6	6	6


**SOLID METAL PLATES WITH WHITE FRAME - STAINLESS STEEL BRUSH FINISHED**

(HSN Code - 85381090)

COLOUR	MODULE	1 Module	2 Module	3 Module	4 Module	6 Module	8 Module Horizontal	8 Module Square	9 Module Horizontal	12 Module	16 Module	18 Module
Victorian SS	CODE	30726SS	30737SS	30748SS	30759SS	30760SS	30781SS	-	-	-	-	-
<b>Unit Sale Price Rs per number</b>		<b>485</b>	<b>485</b>	<b>651</b>	<b>695</b>	<b>947</b>	<b>1043</b>	<b>-</b>	<b>-</b>	<b>-</b>	<b>-</b>	<b>-</b>
Maximum Retail Price (Inclusive of all taxes) Rs.		2425	2425	3255	3475	4735	5215	-	-	-	-	-
Standard Packing Quantity (Number)		5	5	5	5	5	5	-	-	-	-	-


**CLASSIC GOLD PLATES WITH WHITE FRAME - 24KT GOLD PLATED CASTED ROPE BORDER**

(HSN Code - 85381090)

COLOUR	MODULE	1 Module	2 Module	3 Module	4 Module	6 Module	8 Module Horizontal	8 Module Square	9 Module Horizontal	12 Module	16 Module	18 Module
Classic Gold	CODE	21871GD	21882GD	21893GD	21907GD	21918GD	-	21929GD	-	21930GD	-	-
<b>Unit Sale Price Rs per number</b>		<b>2834</b>	<b>2834</b>	<b>3304</b>	<b>3854</b>	<b>5080</b>	<b>-</b>	<b>5798</b>	<b>-</b>	<b>8452</b>	<b>-</b>	<b>-</b>
Maximum Retail Price (Inclusive of all taxes) Rs.		14170	14170	16520	19270	25400	-	28990	-	42260	-	-
Standard Packing Quantity (Number)		5	5	5	5	5	-	5	-	5	-	-